

## Floor entry pipe bend 160 for district heating lines

### MSH Basic FUBO-FIX RB160 r1000

Article no.: 1900500160, GTIN: 4052487157438

For the feeding in and sealing of district heating supply lines through the floor slab. Positioning with separately available clip system on the district heating installation fixture and combination with spiral hose system and sealing elements.



Picture may differ from selected product

## FACTS

### Scope of delivery:

- 1 piece of pipe bend Øi 160 mm
- 1 piece of wall sleeve Øi 150 mm, partially coated L=650 mm

## Dimensions:

- Pipe bend radius: max. 1,000 mm

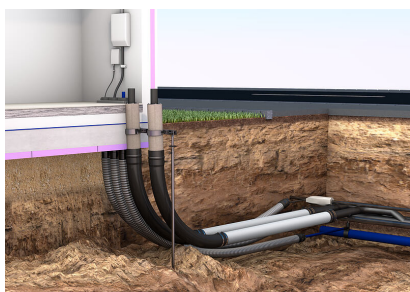
## Application range:

- Water exposure class DIN 18533: W1-E
- Waterproof concrete stress class 1 and 2

## Material:

- PVC

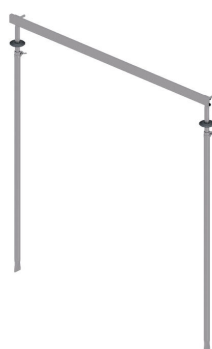
## PICTURES



## ACCESSORIES REQUIRED



Fastening bracket 160



Installation fixture