

Slab entry with foil flange

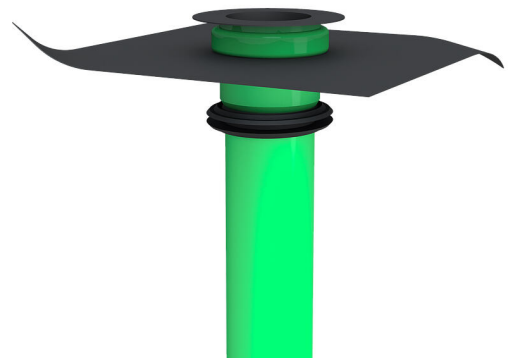
BDFF200 KG2000

Article no.: 3030551739, GTIN: 4052487246507



- **ready for installation in the slab**

For connecting KG/HT pipes. Gas and watertight connection to the base plate with an integrated lip seal. Includes foil flange for connection to a bituminous thick coating, weldable membrane, or vapour barrier.



Picture may differ from selected product

FACTS

Advantages:

- easy connection of the sealing or vapour barrier using a foil flange
- no interruption of the waste water pipe system
- with push-in socket on one side to fit standard KG/HT pipes
- available in KG and KG2000

Scope of delivery:

- KG pipe with bonded lip seal
- KG2000 pipe with welded-on lip seal
- 1 piece of construction time protection cover
- oil and bitumen-resistant foil flange

Dimensions:

- Pipe length: 500 mm
- Foil flange up to DN 160: 500 x 500 mm
- Foil flange DN 200: 750 x 750 mm

Application range:

- Water exposure class DIN 18533: W1-E
- Waterproof concrete stress class 1, waterproof concrete stress class 2

Material:

- KG pipe: PVC-U/KG2000 pipe: PP
- Lip seal: TPE
- Foil flange: EPDM

Tightness:

- pressure-rated up to 5,0 bar - equivalent to 50 m of water column

FEATURES

suitable for medium pipe OD (mm):	200
Type:	KG2000
Packing unit:	1