

# Floor drain with foil flange with backstop

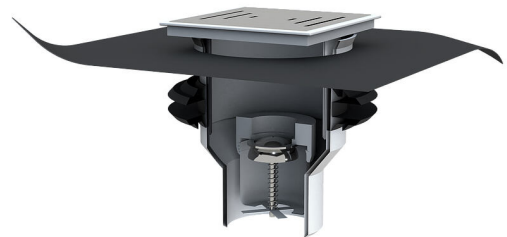
## BALF RLS

Article no.: 3030551821, GTIN: 4052487247108



- **ready for installation in the slab**
- **frost-resistant backflow and odor barrier**

Gas and watertight connection to the base plate with an integrated lip seal. Includes foil flange for connection to a bituminous thick coating, weldable membrane, or vapour barrier.



Picture may differ from selected product

## FACTS

### Advantages:

- easy connection of the sealing or vapour barrier using a foil flange
- Fixed stainless steel grate
- Class K3 - loadable up to 300 kg
- Top frame infinitely adjustable and rotatable from 30-70 mm

### Scope of delivery:

- 1 piece of construction time protection cover
- 1 piece of sludge trap screen
- 1 piece of return flow and odor barrier

## Dimensions:

- Top frame: 150 x 150 mm
- Drain connection: DN 110
- Foil flange: 500 x 500 mm

## Properties:

- Discharge rate: 1.68 l/s

## Application range:

- Waterproof concrete stress class 1, waterproof concrete stress class 2

## Material:

- Base body: PP
- Drain grate: Stainless steel
- Lip seal: TPE
- Foil flange: EPDM

## Tightness:

- pressure-rated up to 5,0 bar - equivalent to 50 m of water column

# FEATURES

suitable for medium pipe OD  
(mm):

110