

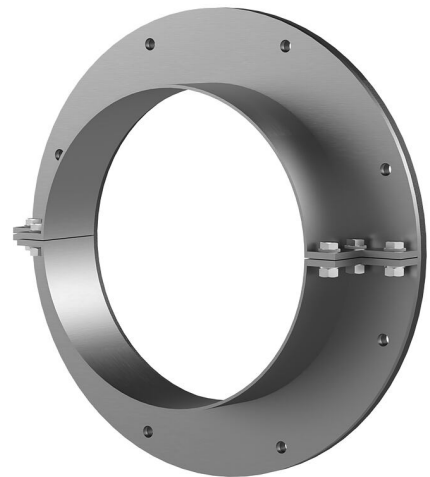
Stainless steel flange split

for retrofit installation

FAG1x500/80 A2

Article no.: 910990003, GTIN: 4052487021296

For fixing existing cut-outs/penetrations in walls or floor slabs for already installed cables or pipes.



Picture may differ from selected product

FACTS

Advantages:

- Split design for already installed cables or pipes.
- Tailor-made designs can also be produced
- Also available with multiple entries and in a variety of diameters

Scope of delivery:

- 1 piece of stainless steel flange
- 1 piece of surface seal
- Fastening elements

Dimensions:

- Standard flange OD is equivalent to the corresponding wall sleeve ID + approx. 150 mm (for one entry. See the brochure for detailed information)
- Standard upper length: 80 mm

Application range:

- Water exposure class DIN 18533: W1-E and W2.1-E
- Waterproof concrete stress class 1 and 2

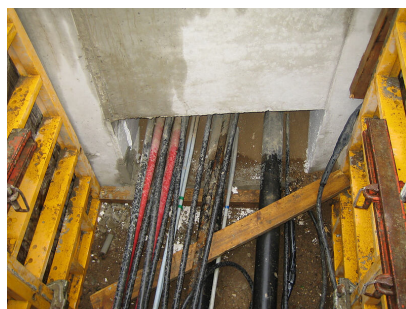
Material:

- Flange: stainless steel V2A (AISI 304L) or V4A (AISI 316L)
- Surface seal: EPDM
- Fastenings: stainless steel V4A (AISI 316L)

FEATURES

Wall sleeve ID (mm):	500
Wall sleeve wall thickness (mm):	4
Flange standard dimensions (mm):	650

PICTURES



ACCESSORIES REQUIRED



EGO sealant