

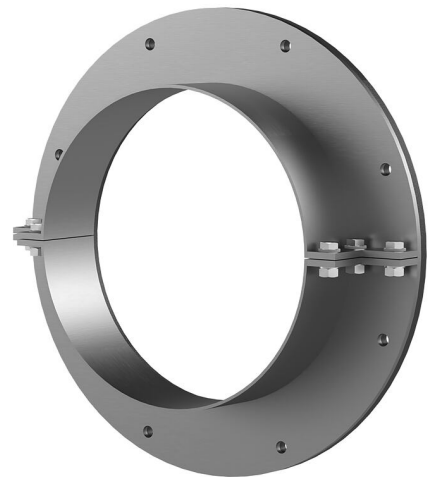
# Stainless steel flange split

## for retrofit installation

FAG1x350/80 A2

Article no.: 910983500, GTIN: 4052487021265

For fixing existing cut-outs/penetrations in walls or floor slabs for already installed cables or pipes.



Picture may differ from selected product

## FACTS

### Advantages:

- Split design for already installed cables or pipes.
- Tailor-made designs can also be produced
- Also available with multiple entries and in a variety of diameters

### Scope of delivery:

- 1 piece of stainless steel flange
- 1 piece of surface seal
- Fastening elements

## Dimensions:

- Standard flange OD is equivalent to the corresponding wall sleeve ID + approx. 150 mm (for one entry. See the brochure for detailed information)
- Standard upper length: 80 mm

## Application range:

- Water exposure class DIN 18533: W1-E and W2.1-E
- Waterproof concrete stress class 1 and 2

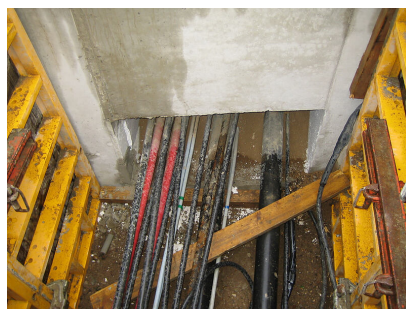
## Material:

- Flange: stainless steel V2A (AISI 304L) or V4A (AISI 316L)
- Surface seal: EPDM
- Fastenings: stainless steel V4A (AISI 316L)

## FEATURES

Wall sleeve ID (mm):	350
Wall sleeve wall thickness (mm):	3
Flange standard dimensions (mm):	500

## PICTURES



# ACCESSORIES REQUIRED



EGO sealant