

# Membrane injection system

## for buildings with a basement

### MIS60D 3x10 BL1300 Set10

Article no.: 3030391739, GTIN: 4052487230711



- **universal building entry with membrane injection system for core holes in the most common types of wall**
- **Controlled resin discharge through slotted membrane hose**
- **sealing lips ensure gentle seal for cables/pipes**



Picture may differ from selected product

For existing buildings with a basement for reliable sealing of standard water pipes.

## FACTS

### Advantages:

- Quick to assemble in just a few minutes
- No repair of the basement waterproofing in accordance with DIN 18533 necessary
- Variable sealing configuration thanks to various sealing inserts

### Scope of delivery:

- 1 packing unit:
- 10 pieces of MIS 60D including pre-mounted seal insert
- 10 pieces of wall terminator element (only for communication variant)
- 10 pieces of wall rosette (only with electricity variant)
- 10 pieces 2-component resin Resinator, 150 ml
- 1 piece of quick tensioning device MIS60 SVS



## Dimensions:

- For core drills Ø: 62 - 65 mm
- For wall thicknesses: from 200 to 1200 mm

## Application range:

- Water exposure class DIN 18533: W1-E and W2.1-E
- Waterproof concrete stress class 1 and 2

## Material:

- Flange, seal insert, counter-bearing and adapter: EPDM
- Sealing tape: butyl
- Resin injection hose: PE
- Wall rosette: PE
- Pipe: PVC-U
- Wall terminator element: Flame-retardant polycarbonate
- Quick tensioning device: glass fibre reinforced polyamide/ABS

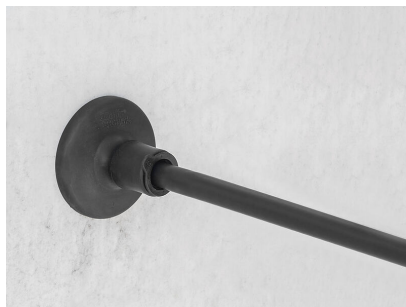
## Tightness:

- gastight and watertight to 1.0 bar
- radon-proof

## FEATURES

Number of cables/medium:	3
suitable for medium pipe OD (mm):	10
Overall length (mm):	1300
Wall thickness (mm):	900 - 1.200

## PICTURES



## ACCESSORIES REQUIRED



Cartridge gun



Quick tensioning device