

# Membrane injection system

## for buildings with a basement

### MIS40D 2x5-7 BL1000 Set10

Article no.: 3030380163, GTIN: 4052487229920



- **universal building entry with membrane injection system for core holes in the most common types of wall**
- **Controlled resin discharge through slotted membrane hose**
- **sealing lips ensure gentle seal for cables/pipes**



Picture may differ from selected product

For reliable sealing of fibre optic and telecommunications cables.

## FACTS

### Advantages:

- Quick to assemble in just a few minutes
- No repair of the basement waterproofing in accordance with DIN 18533 necessary

### Scope of delivery:

- 1 packing unit:
- 10 pieces of MIS40
- 10 pieces of wall terminator element
- 10 pieces 2-component resin Resinator, 150 ml
- 1 piece of quick tensioning device MIS40 SVS

## Dimensions:

- For core drills ID: 40 - 50 mm

## Application range:

- Water exposure class DIN 18533: W1-E and W2.1-E
- Waterproof concrete stress class 1 and 2

## Material:

- Flange and counter-bearing EPDM
- Resin injection hose: PE
- Sealing tape: butyl
- Pipe: PVC-U
- Wall terminator element: Flame-retardant polycarbonate
- Quick tensioning device: glass fibre reinforced polyamide/ABS

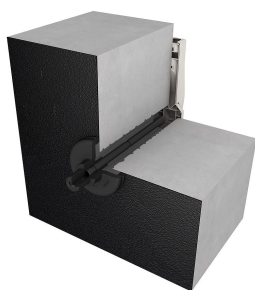
## Tightness:

- gastight and watertight to 1.0 bar

## FEATURES

|                                   |           |
|-----------------------------------|-----------|
| Number of cables/medium:          | 2         |
| suitable for medium pipe OD (mm): | 5 - 7     |
| Overall length (mm):              | 1000      |
| Wall thickness (mm):              | 200 - 900 |

## PICTURES



## ACCESSORIES REQUIRED



Cartridge gun



Quick tensioning device