

Blind plug

TO32

Article no.: 3030315813, GTIN: 4052487228459



- **easy installation and removal with just two moves**

For sealing unused core drills or wall sleeves.



Picture may differ from selected product

FACTS

Advantages:

- Longevity
- Reusable
- Protects unused openings against dirt and animals
- available from stock

Application range:

- Water exposure class DIN 18533: W1-E
- Waterproof concrete stress class 1 and 2

Material:

- EPDM

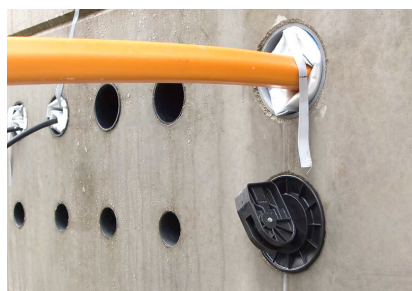
Tightness:

- gastight and watertight to 0.5 bar

FEATURES

Wall sleeve/core drilled hole ID (mm):	27,5-30
Packing unit:	10

PICTURES



KONEKT hauff-technik



KONEKT hauff-technik