

Double wall insert with flange connection

for setting in concrete

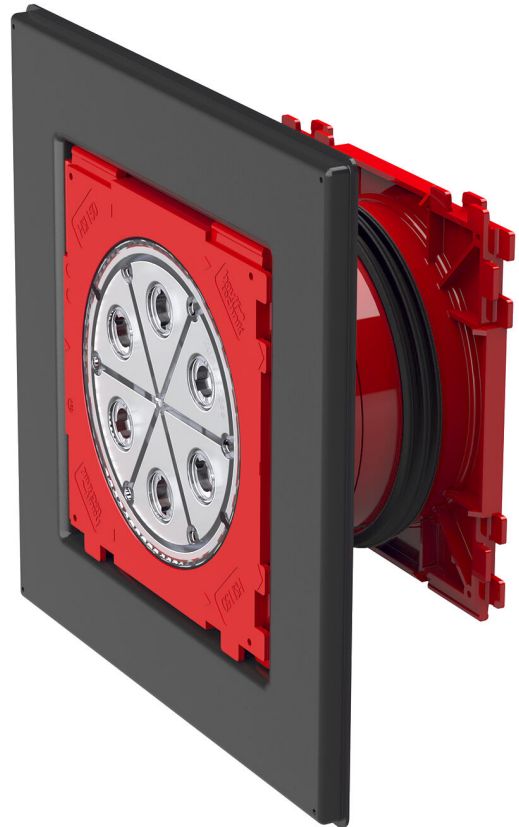
HSI150 1x1 K2 AF/500

Article no.: 2102070017, GTIN: 4052487219631



- **Flange for plastic-modified bitumen thick coatings**
- **Tested solution for use in pre-applied membrane sheet systems**
- **1x1 or 1x4 package arrangement**
- **Quality mark on both sides: factory-sealed. Option to check for accidental or unauthorized opening of the closing cover**

For the gastight and watertight connection on both sides of system seals for cables or cable ducts, providing high flexibility for future use.



Picture may differ from selected product

FACTS

Advantages:

- System seal can be connected on both sides (e.g. cable duct connection and cable seal)
- Easy installation in the formwork using the pre-drilled nail holes.



Scope of delivery:

- 2 pieces of pressure-tight closing covers

Dimensions:

- Frame dimensions 1x1 package configuration: 340 x 340 mm
- Frame dimensions 1x4 package configuration: 970 x 340 mm
- Minimum wall thickness 140 mm

Properties:

- FHRK-certified

Application range:

- Water exposure class DIN 18533: W1-E and W2.1-E
- Waterproof concrete stress class 1 and 2

Material:

- Wall insert: ABS with TPE 3-ribbed seal
- Adapter pipe: PVC
- Closing cover: ABS with TPE seal
- Flange: ABS

Tightness:

- gastight and watertight to 2.5 bar
- radon-proof

FEATURES

Wall thickness
(mm): 500

PICTURES

