

Single wall insert with flange connection

for setting in concrete

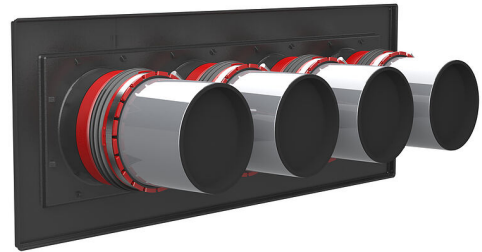
HSI150 1x4 K AF/120

Article no.: 2102070024, GTIN: 4052487219761



- **Flange for plastic-modified bitumen thick coatings**

- **Tested solution for use in pre-applied membrane sheet systems**
- **1x1 or 1x4 package arrangement**
- **Quality seal: tightness from the factory.**
Option to check for accidental or unauthorized opening of the closing cover



Picture may differ from selected product

"For the gas-tight and watertight connection on one side of system seals for cables or cable ducts, providing high flexibility for future use."

FACTS

Advantages:

- System seal can be connected (e.g. cable duct connection or cable seal)
- Easy installation in the formwork using the pre-drilled nail holes.

Scope of delivery:

- 1 piece pressure-tight closing cover



Dimensions:

- Frame dimensions 1x1 package configuration: 340 x 340 mm
- Frame dimensions 1x4 package configuration: 970 x 340 mm
- Minimum wall thickness: 100 mm

Properties:

- FHRK-certified

Application range:

- Water exposure class DIN 18533: W1-E and W2.1-E
- Waterproof concrete stress class 1 and 2

Material:

- Wall insert: ABS with TPE 3-ribbed seal
- Adapter pipe: PVC
- Closing cover: ABS with TPE seal
- Flange: ABS

Tightness:

- gastight and watertight to 2.5 bar
- radon-proof

FEATURES

Wall thickness
(mm): 120

PICTURES

