

# Fibre optic building entry

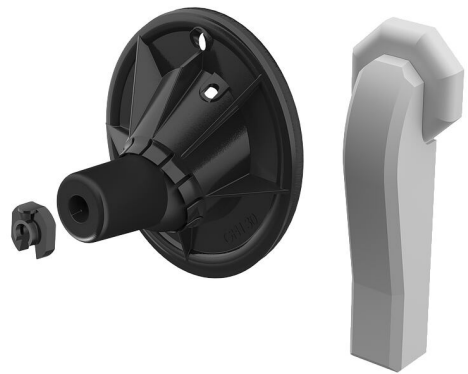
## for buildings without a basement

### GFH20 2x7-10 PRO

Article no.: 2900001311, GTIN: 4052487209823



- **universal building entry with injection system for drill holes in the most common types of wall**
- **enables horizontal or angled installation up to a 45° angle**
- **gentle sealing of fibre optic cables using sealing lips**



Picture may differ from selected product

For reliable sealing of fibre optic cables.

## FACTS

### Advantages:

- Quick to assemble in just a few minutes
- Small opening diameter Øi 20 mm
- Wall termination for guided routing and mechanical protection of cables inside the building

### Scope of delivery:

- 1 piece of GFH20
- 1 piece of Hauff RESINATOR 2-component resin, 80 ml
- 1 piece of mixing nozzle
- 1 piece of wall terminator element
- suitable number of pipe clamps, depending on variant

## Dimensions:

- Application range: 2 fibre-optic cables with Øo 7-10 mm or 1 fibre-optic cable with Øo 6 - 13 mm or 1 fibre-optic cable with Øo 12 - 16 mm
- for drill holes Øi: 20 mm
- for wall thicknesses starting from 100 mm

## Application range:

- Water exposure class DIN 18533: W1-E and W2.1-E
- Waterproof concrete stress class 1 and 2

## Material:

- Flange: ABS
- Ball insert: EPDM
- Sealing tape: Butyl
- Installation disc: PA
- Pipe clamp: ABS

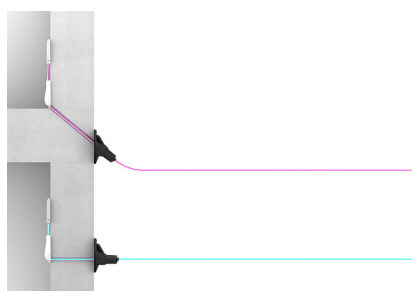
## Tightness:

- gastight and watertight to 1.0 bar

## FEATURES

Number of cables/medium:	2
suitable for medium pipe OD (mm):	7 - 10

## PICTURES



## ACCESSORIES REQUIRED



Cartridge gun