

Membrane injection system

for buildings with a basement

MIS90D 1x24-52+2x7 L SET

Article no.: 3030300142, GTIN: 4052487220286



- **universal building entry with membrane injection system for core holes in the most common types of wall**
- **Controlled resin discharge through slotted membrane hose**
- **simultaneous sealing of power, water and communication services**



Picture may differ from selected product

For reliable sealing of all electricity and telecommunications lines without additional shrinking using a sealing sleeve.

FACTS

Advantages:

- Quick to assemble in just a few minutes
- No repair of the basement waterproofing in accordance with DIN 18533 necessary
- Flexibility using a sealing sleeve with segmented ring technology

Scope of delivery:

- 1 packing unit:
- 6 pieces of MIS 90 including pre-mounted sleeve cap
- 6 pieces of wall collars

Dimensions:

- For core drills ID: 92 - 102 mm

Application range:

- Water exposure class DIN 18533: W1-E and W2.1-E
- Waterproof concrete stress class 1 and 2

Material:

- Flange, counter-bearing, sleeve cap, wall rosette, membrane hose: EPDM
- Resin injection hose: PE
- Pipe: PVC-U
- Sealing tape: butyl
- Stainless steel clamping straps: V2A (AISI 304L)

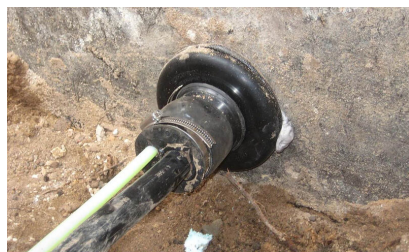
Tightness:

- gastight and watertight to 1.0 bar

FEATURES

Number of cables/medium overall:	3
Number of cables/medium:	1 2
suitable for medium pipe OD (mm):	24-52 7
Overall lenght (mm):	1300
Wall thickness (mm):	900 - 1.200
Packing unit:	6

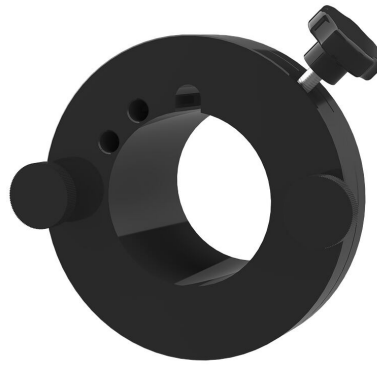
PICTURES



ACCESSORIES REQUIRED



Cartridge gun



Quick tensioning device



2-component resin M3000