

Bellmouth Wall Sleeve

for setting in concrete

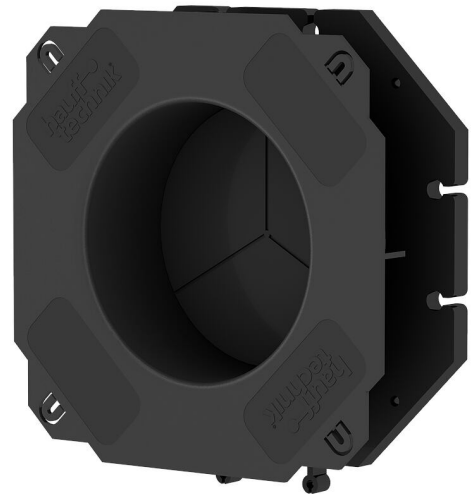
BWS150/160

Article no.: 827030150, GTIN: 4052487196031



- **frame connection system for creation of packages on site – compatible with all three sizes**
- **easy adjustment to the wall thickness on site – using available pipes**

For installation flush with the formwork and use of standard press seals.



Picture may differ from selected product

FACTS

Advantages:

- Integrated bellmouth shape protects the cables from damage
- blind plate for pressure tight seal immediately after concreting
- Trisection division of the blind plate for easy breaking through
- Flange can also be used for the application with bitumen thick coatings (PMBC)

Properties:

- Puddle flange serves as water barrier
- Lugs for fastening to the reinforcement
- Nailing lugs for easy fastening to the formwork

Material:

- ABS

Tightness:

- gastight and watertight up to 1.0 bar right after concreting

FEATURES

Wall sleeve ID (mm):	150
Wall sleeve OD (mm):	160
flange surface dimension (mm):	250
Minimum wall thickness (mm):	120

PICTURES

