

# Membrane injection system

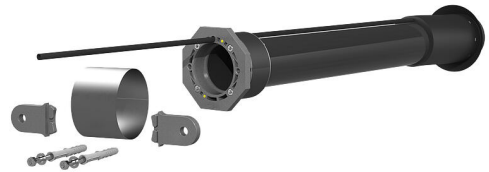
## for buildings with a basement

MIS100ND VT63

Article no.: 2900300800, GTIN: 4052487174299



- **no groundwork at the property**
- **universal building entry with membrane injection system for core holes in the most common types of wall**
- **Controlled resin discharge through slotted membrane hose**



Picture may differ from selected product

For the reliable sealing of drinking water, power or telecommunications services. A drilling rocket is used to excavate a continuous empty conduit route from the basement of the building to the edge of the property.

## FACTS

### Advantages:

- Can be fully installed from the inside of building
- Ideal for applications in which the building connection route has been built over or is difficult to access

### Scope of delivery:

- 1 piece of octagonal inner sealing element
- 1 piece of MIS 100/VT63 flange unit with sleeve pipe and connection sleeve
- 2 pieces of self-tapping screws M8x45 and washers for sealing service lines
- Outer sealing element with injection hose
- 2 pieces of twist protection flaps

## Dimensions:

- For core drills: ID 99 - 103 mm
- For wall thicknesses: from 240 to 600 mm

## Application range:

- Water exposure class DIN 18533: W1-E
- Waterproof concrete stress class 1 and 2

## Material:

- Front plate: glass fibre reinforced polyamide
- Sealing rubber, flange, seal insert and counter-bearing: EPDM
- Pipe: PVC-U
- Screws and washers: stainless steel V2A (AISI 304L)

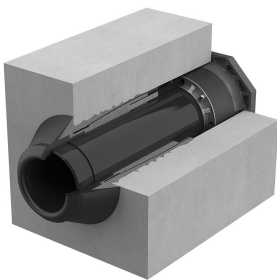
## Tightness:

- gastight and watertight to 1.0 bar

## FEATURES

Number of cables/medium:	1
suitable for medium pipe OD (mm):	63
Wall thickness (mm):	240 - 600

## PICTURES



## ACCESSORIES REQUIRED



Lubricant



Assembly kit MIS NoDig



2-component resin M3000