

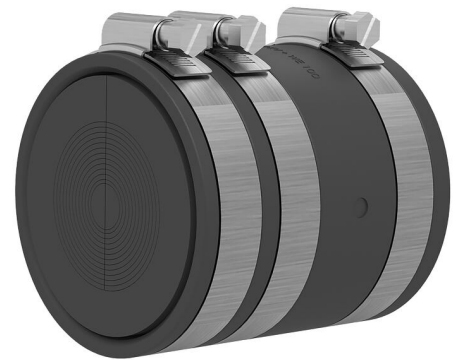
Sealing set interchangeable insert

for cable sealing at the end of the duct

KES90 MA90-102/90-102 WE100 SG 1x18-65

Article no.: 2225817101, GTIN: 4052487164726

Sealing set with sleeve KES-M 90-WE including split interchangeable insert with segment ring technology for sealing cables with a rubber seal technology at the end of Hateflex14090 spiral duct.



Picture may differ from selected product

FACTS

Advantages:

- Segmented ring technology for adjustment on-site to pipe diameters
- The interchangeable insert is installed after the cables have been laid
- The entire cross-section of the duct system is used when cables are laid

Scope of delivery:

- Blind plugs
- Sleeve with clamping straps: KES-M 90-WE

Dimensions:

- Sealing width interchangeable insert: 60 mm
- Interchangeable insert: OD 100 mm
- Cable Øa: 18 - 65 mm

Material:

- Sleeve: EPDM
- Clamping straps: W4
- Flange component, Interchangeable insert: EPDM

Tightness:

- gastight and watertight to 0.5 bar

FEATURES

Item: Abdichtset Wechseleinsatz

PICTURES

