

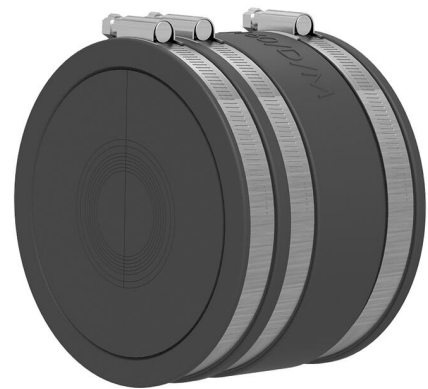
# Sealing set interchangeable insert

## for cable sealing at the end of the duct

### KES150 MA WE160 SG 1x48-83 SET

Article no.: 2125817103, GTIN: 4052487164764

Sealing set with sleeve including split interchangeable insert with segment ring technology for sealing cables with rubber seal at the end of Hateflex spiral duct 14150.



Picture may differ from selected product

## FACTS

### Advantages:

- Segmented ring technology for adjustment on-site to pipe diameters
- The interchangeable insert is installed after the cables have been laid
- The entire cross-section of the duct system is used when cables are laid

### Scope of delivery:

- Blind plugs
- Sleeve with clamping straps

### Dimensions:

- Interchangeable insert: OD 160 mm
- Interchangeable insert: OD 100 mm
- Maximum configuration: according to variant table

## Material:

- Sleeve: EPDM
- Clamping straps: W4
- Flange component, Interchangeable insert: EPDM

## Tightness:

- gastight and watertight to 0.5 bar

## FEATURES

Number of cables/medium:	1
Area of application cable OD (mm):	48-83

## PICTURES

