

Universal wall entry

without edges for installation in double walls/element walls

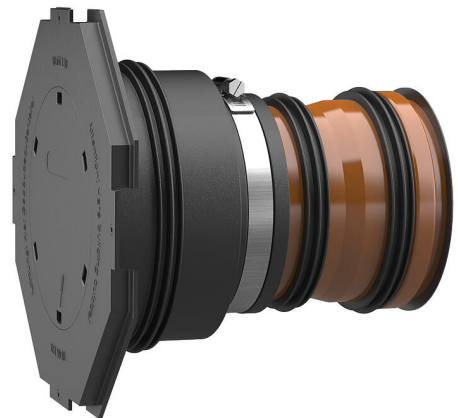
UDME150/365 KG

Article no.: 3030300240, GTIN: 4052487221139



- **with integrated flange to connect foils**
- **no change in flow direction**
- **pressure-sealed after concreting**

Optimised flow through the wall - prevents blockages and backflow in the drainage system. Three 3-ribbed seals for sealing in double element walls.



Picture may differ from selected product

FACTS

Advantages:

- Delivered to the required wall thickness
- Three 3-ribbed seals for use in double element walls
- pressure-sealed after concreting

Scope of delivery:

- 1 piece of rubber sleeve with integrated 3-ribbed seal
- 1 piece of clamping strap
- 1 piece of sleeve cover with flange and blind cover for knock in
- 2 additional 3-ribbed seals
- 1 piece of lamella plugs
- 1 piece of KG (2000) pipe (pre-mounted ready for installation)



Dimensions:

- DN 110: minimum wall thickness 240 mm
- DN 150: minimum wall thickness 300 mm

Properties:

- for installation flush with the formwork
- Blind sealed and ready for installation
- available in KG and KG2000 quality

Application range:

- Water exposure class DIN 18533: W1-E and W2.1-E
- Waterproof concrete stress class 1 and 2

Material:

- Rubber sleeve and 3-ribbed seals: EPDM
- Sleeve cover: ABS
- Clamping strap: Steel St sn (W1)
- Lamella plugs: PE
- KG pipe: PVC-U/KG2000 pipe: PP

Tightness:

- gastight and watertight
- radon-proof

Tests/Standards:

- KG2000 pipes to DIN EN 14758
- KG pipes to DIN EN 13476-2

FEATURES

Nominal diameter of KG pipe:	DN 150
suitable for medium pipe OD (mm):	160 mm
Wall thickness (mm):	365
Packing unit:	5

PICTURES

