

# Universal wall entry

## without edges

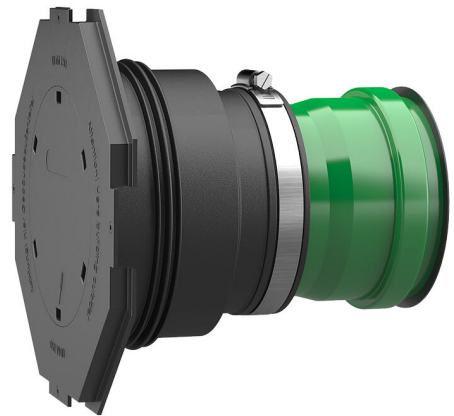
### UDM150/400 KG2000

Article no.: 3030300216, GTIN: 4052487215800



- **with integrated flange to connect foils**
- **no change in flow direction**
- **pressure-sealed after concreting**

Optimised flow through the wall - prevents blockages and backflow in the drainage system. The special design allows standard KG (2000) pipes to be adapted to the wall thickness and converted into a wall penetration directly on site. Can also be supplied to the required wall thickness.



Picture may differ from selected product

## FACTS

### Advantages:

- Can be cut to length on site or supplied to the required wall thickness
- Quick and easy installation
- Ideal for storing

### Scope of delivery:

- Scope of delivery without KG pipe: rubber sleeve, clamping band, sleeve cover with flange and blind cover for knock-in, lamella plug (pre-assembled)
- Scope of delivery with KG pipe: rubber sleeve, clamping strap, sleeve cover with flange and blind cover for knock-in, lamella plug and KG (2000) pipe (pre-assembled ready for installation)



## Dimensions:

- DN 110: minimum wall thickness 200 mm
- DN 150: minimum wall thickness 240 mm

## Properties:

- for installation flush with the formwork
- Blind sealed and ready for installation
- available for KG and KG2000 pipes, DN 110 and DN 160

## Application range:

- Water exposure class DIN 18533: W1-E and W2.1-E
- Waterproof concrete stress class 1 and 2

## Material:

- Rubber sleeve: EPDM
- Sleeve cover: ABS
- Clamping strap: Steel St sn (W1)
- Lamella plugs: PE
- KG pipe: PVC-U/KG2000 pipe: PP

## Tightness:

- gastight and watertight
- radon-proof

## Tests/Standards:

- KG2000 pipes to DIN EN 14758
- KG pipes to DIN EN 13476-2

# FEATURES

Nominal diameter of KG pipe:	DN 150
suitable for medium pipe OD (mm):	160 mm
Wall thickness (mm):	400
Packing unit:	1

## PICTURES

