

System cover

for connection to the wall insert HSI90

KES MA90 D

Article no.: 2225810000, GTIN: 4052487061377



- **Mechanical fixing (bayonet) and sealing (clamping nut) act independently**
- **Bayonet system with backstop and counter screw connection (prevents self-opening)**

For connecting the Hateflex spiral duct 14090 to the wall insert or polymer flange HSI90.



Picture may differ from selected product

FACTS

Advantages:

- Mechanically stable, flexible connection with system sleeve
- Flexible adjustment of duct length using the sleeve method

Scope of delivery:

- 1 piece sleeve with clamping straps

Material:

- System cover: polycarbonate
- Clamping nut: PC/PBT blend
- Sleeve: EPDM
- Clamping straps: W4

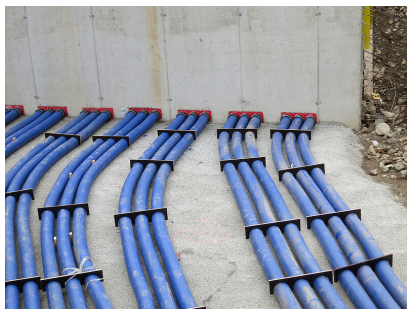
Tightness:

- gastight and watertight to 2.5 bar

FEATURES

Item: Systemdeckel

PICTURES



ACCESSORIES REQUIRED



Flexible socket wrench



Universal Toolset