

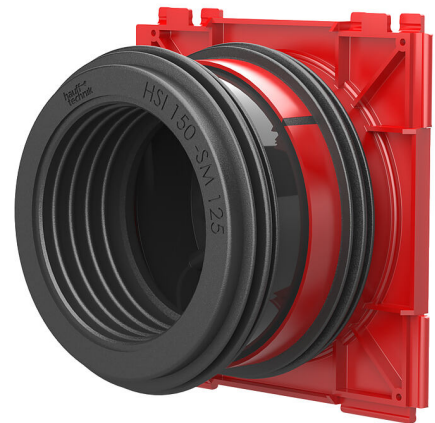
# Single wall insert with plug-in socket

for setting in concrete and connecting smooth cable ducts

3030303414



- **injection molded 3-ribbed seal for pressure-tightness seal with concrete**
- **Available from wall thicknesses 120 mm (GSM 110 and GSM 125)**
- **Quality seal: tightness from the factory. Option to check for accidental or unauthorized opening of the closing cover**



For the one-sided connection of system seals for cables (inside) and for connecting cable ducts (outside).

Picture may differ from selected product

## FACTS

### Advantages:

- System seal can be connected on one side, there is also an integrated plug-in socket for the connection of smooth cable ducts
- No need for additional pipe connectors
- Pressure-tight closing cover ensures absolute gastightness and watertightness even after the duct has been connected

### Scope of delivery:

- 1 piece pressure-tight closing cover

### Dimensions:

- Frame dimensions: 220x 220 mm
- Centre distance: 210 mm, spacer increases centre distance to 250 mm



## Properties:

- FHRK-certified
- The use of the HSI-AH 40 spacer is recommended, it has to be used with the HSI150-GSM 160

## Application range:

- Waterproof concrete stress class 1 and 2

## Material:

- Wall insert: ABS with TPE 3-ribbed seal
- Adapter pipe: PVC
- Plug-in socket: EPDM
- Clamping strap for HSI150 GSM160/X: W4
- Closing cover: ABS with TPE seal
- Pipe cover: PE or end plug: PVC

## Tightness:

- gastight and watertight to 0.5 bar
- radon-proof

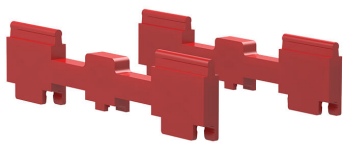
# FEATURES

: 125

# PICTURES



## ACCESSORIES REQUIRED



Spacer