

# Single wall insert

for setting in concrete

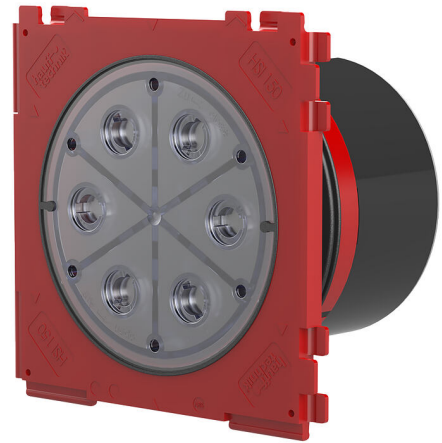
## HSI150 1x1 K/365

Article no.: 3030319193, GTIN: 4052487243889



- **Double security with closing cover and blind plate for wall thicknesses from 70 to 150 mm**
- **injection molded 3-ribbed seal for pressure-tightness seal with concrete**
- **Quality seal: tightness from the factory. Option to check for accidental or unauthorized opening of the closing cover**

"For the gas-tight and watertight connection on one side of system seals for cables or cable ducts, providing high flexibility for future use."



Picture may differ from selected product

## FACTS

### Advantages:

- System seal can be connected (e.g. cable duct connection or cable seal)
- Packages can be created with frame connection system on site

### Scope of delivery:

- 1 piece pressure-tight closing cover



## Dimensions:

- Frame dimensions: 220x 220 mm
- Centre to centre distance: 210 mm
- Minimum wall thickness: 70 mm

## Properties:

- FHRK-certified
- Blind plate for breaking through
- Entry remains pressure tight even if closing cover is removed

## Application range:

- Waterproof concrete stress class 1 and 2

## Material:

- Wall insert: ABS with TPE 3-ribbed seal
- Adapter pipe with blind plate: ABS or for wall thickness > 150 mm: PVC
- Closing cover: ABS with TPE seal

## Tightness:

- gastight and watertight to 2.5 bar
- radon-proof

# FEATURES

Wall thickness  
(mm): 365

# PICTURES

