

# Double wall insert

## for setting in concrete

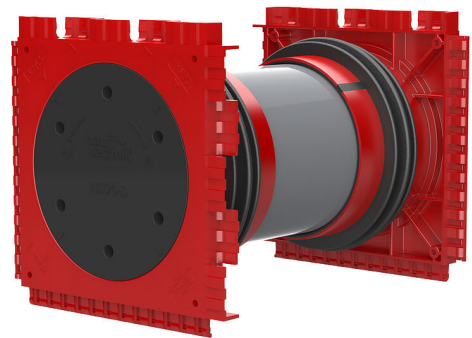
### HSI90 1x1 K2/110

Article no.: 3030318961, GTIN: 4052487244022



- **injection molded 3-ribbed seal for pressure-tightness seal with concrete**

For gastight and watertight connection of system covers for sealing of cables and cable ducts on both sides and maximum flexibility in future use.



Picture may differ from selected product

## FACTS

### Advantages:

- System seal can be connected on both sides (e.g. cable duct connection and cable seal)
- Packages can be created with frame connection system, delivery ex works

### Scope of delivery:

- 2 pieces of pressure-tight closing covers

### Dimensions:

- Frame dimensions: 145x 145 mm (per wall insert)
- Centre distance: 135 mm
- Minimum wall thickness: 100 mm

### Application range:

- Waterproof concrete stress class 1 and 2



## Material:

- Wall insert: ABS with TPE 3-ribbed seal
- Adapter pipe: PVC
- Closing cover: ABS with EPDM seal

## Tightness:

- gastight and watertight to 2.0 bar
- radon-proof

## FEATURES

Wall thickness  
(mm): 110

## PICTURES

