

Double wall insert

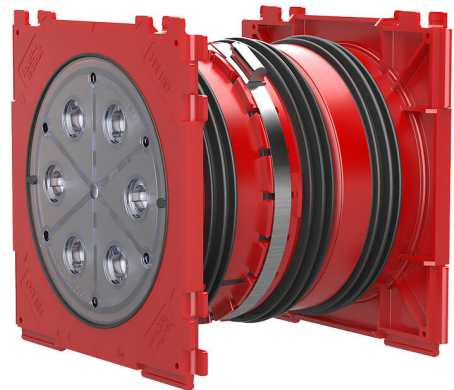
adjustable length, for setting in concrete

HSI150 1x1 K2 Varia 260-365

Article no.: 3030300085, GTIN: 4052487134231



- **stepless adjustment to the required wall thickness on site**
- **Pressure-tight seal with concrete created by three injection molded 3-ribbed seals**
- **Quality mark on both sides: factory-sealed. Option to check for accidental or unauthorized opening of the closing cover**



Picture may differ from selected product

"For the gas-tight and watertight connection on both sides of system seals for cables or cable ducts, providing high flexibility for future use."

FACTS

Advantages:

- System seal can be connected on both sides (e.g. cable duct connection and cable seal)
- Packages can be created with frame connection system on site
- Can be used in all types of walls including modular constructions

Scope of delivery:

- 2 pieces of pressure-tight closing covers
- 1 hex key with integrated torque limiter



Dimensions:

- Frame dimensions: 220x 220 mm
- Centre to centre distance: 210 mm
- Minimum wall thickness: 200 mm

Application range:

- Waterproof concrete stress class 1 and 2

Material:

- Wall insert: ABS with TPE 3-ribbed seal
- Adapter pipe: PVC
- Clamping strap: Steel St sn (W1)
- Closing cover: ABS with TPE seal

Tightness:

- gastight and watertight to 2.5 bar
- radon-proof

FEATURES

Wall thickness (mm):	260-365
Packing unit:	1

PICTURES

