

# Double wall insert

for setting in concrete

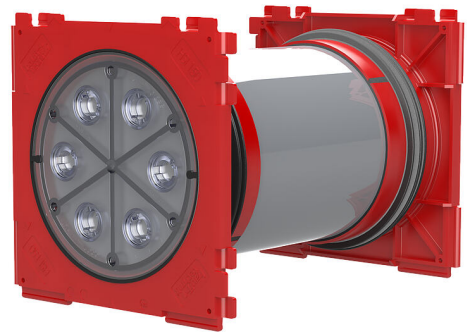
## HSI150 1x1 K2/100

Article no.: 3030314138, GTIN: 4052487243919



- **injection molded 3-ribbed seal for pressure-tightness seal with concrete**
- **Quality mark on both sides: factory-sealed. Option to check for accidental or unauthorized opening of the closing cover**

"For the gas-tight and watertight connection on both sides of system seals for cables or cable ducts, providing high flexibility for future use."



Picture may differ from selected product

## FACTS

### Advantages:

- System seal can be connected on both sides (e.g. cable duct connection and cable seal)
- Packages can be created with frame connection system, delivery ex works

### Scope of delivery:

- 2 pieces of pressure-tight closing covers

### Dimensions:

- Frame dimensions: 220x 220 mm (per wall insert)
- Centre to centre distance: 210 mm
- Minimum wall thickness: 100 mm



## Properties:

- FHRK-certified
- For the duct connection  $\varnothing a=160$  mm, we recommend using the spacer HSI AH40 to extend the center distance when installing multiple HSI150 wall inserts

## Application range:

- Waterproof concrete stress class 1 and 2

## Material:

- Wall insert: ABS with TPE 3-ribbed seal
- Adapter pipe: PVC
- Closing cover: ABS with TPE seal

## Tightness:

- gastight and watertight to 2.5 bar
- radon-proof

## FEATURES

Wall thickness  
(mm): 100

## PICTURES

