

# Earthing entry

for building entry according to DIN 18533 (black tank)

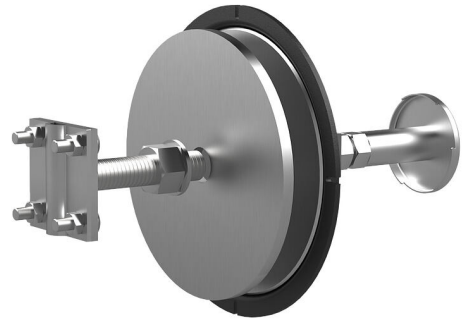
## HEA W M12/200

Article no.: 1700040200, GTIN: 4052487136518



- **Patented anti-twist protection thanks to the special shape of the contact disc**

For wall installation flush with formwork in buildings with outer seal according to DIN 18533. The outer seal is integrated with a fixed/loose flange. The earthing connections are made using the cross clamp or the connection thread.



Picture may differ from selected product

## FACTS

### Advantages:

- Suitable for black tank
- Watertight connection thread on both sides (blind hole)
- Resistant to corrosion

### Scope of delivery:

- 1 piece of cross-clamp with M20 thread

### Dimensions:

- Fixed/loose flange: OD 210 mm
- Conductor core: round, Ø 25 mm
- Conductor core connection: with M16 threaded bolt
- Contact washer: Ø 72 mm
- Minimum wall thickness: 180 mm

## Application range:

- Water exposure class DIN 18533: W1-E, W2.1-E and W2.2-E

## Material:

- Fixed/loose flange: V4A (AISI 316L)
- Conductor core and contact washers: stainless steel V4A (AISI 316L)
- Conductor core connection: St37 galvanised
- Protective covers: PE
- M20 cross-clamp: stainless steel V4A (AISI 316L)

## Tests/Standards:

- To DIN 18014
- DIN EN 62305-3
- VDE 0185-305-3 (with lightning protection application)

## FEATURES

Wall thickness (mm):	200
Threaded bolt:	M12