

# System cover

## with sleeve method for plastic spiral duct

### KES MA150 D

Article no.: 2125810000, GTIN: 4052487058070



- **Mechanical fixing (bayonet) and sealing (clamping nut) act independently**
- **Bayonet system with backstop and counter screw connection (prevents self-opening)**

For use with wall insert and polymer flange HSI150, and for connecting ducts. The seal is created using the sleeve method, clamping a rubber sleeve onto both the system cover and the plastic spiral hose with clamping straps.



Picture may differ from selected product

## FACTS

### Advantages:

- Mechanically stable, flexible connection with system sleeve
- Flexible adjustment of duct length using the sleeve method

### Scope of delivery:

- 1 piece sleeve with clamping straps

### Properties:

- FHRK-certified
- For duct connections, we recommend using the spacer HSI AH40 to increase the center distance when installing multiple HSI150 wall inserts



## Material:

- System cover: polycarbonate
- Clamping nut: PC/PBT blend
- Sleeve: EPDM
- Clamping straps: W4

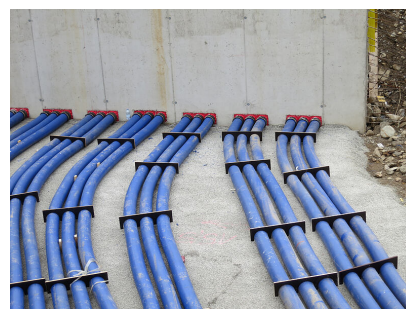
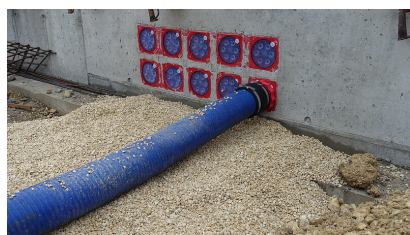
## Tightness:

- gastight and watertight to 2.5 bar

## FEATURES

Item: Systemdeckel

## PICTURES



## ACCESSORIES REQUIRED



Flexible socket wrench



Universal Toolset