

Single-line XL building package

for buildings without a basement

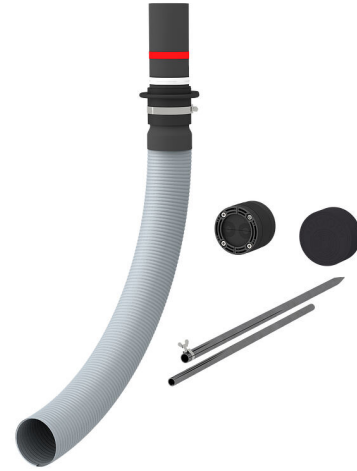
ESG100 FUBO BHPXL10m

Article no.: 3030323391, GTIN: 4052487225243



- **Tested pressure tight duct system**
- **variable height adaptation to the finished floor level**

XL building package in the form of a single-line building entry system suitable for gas, water or power supplies. For sealing larger pipe diameters for the media electricity, water or gas up to DN50, with flexible, pressure-tight and coverable empty pipe system.



Picture may differ from selected product

FACTS

Advantages:

- Easy to position and align
- Continuous duct connection possible

Scope of delivery:

- 1 piece of basic insert for floor slab: ESG100 FUBO, factory-connected with tested empty conduit system
- 1 piece of installation fixture with water barrier flange
- 1 piece of Spiral hose 14110/10000
- 1 piece of sealing element for water or electricity: HRK100 SSG 1x18-65 b40 PAGF/A4/EPDM55
- 1 piece of empty duct connection: ABEK95/102/110 1x18-65+2x16-20+2x12-16+2x5-10 b50



Dimensions:

- Basic insert ID: 100 mm
- Spiral hose: Øi: 110 mm
- Sealing element: area of application: 1 electric cable with Øa 18-65 mm, sealing width: 40mm
- Sealing cap: for duct Øi: 95/102/110 mm, for lines Øa: 1x18-65, 2x5-10, 2x12-16, 2x16-20

Properties:

- DVGW-certified
- variable height adaptation to the finished floor level

Application range:

- Water exposure class DIN 18533: W1-E
- Waterproof concrete stress class 1 and 2

Tightness:

- gastight and watertight to 1.0 bar

FEATURES

Hose length (m): 10.0

Packing unit: 4

PICTURES

