

Plastic spiral hose

for cable entry system

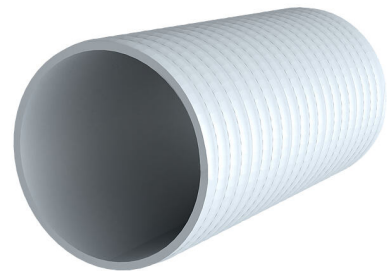
Hateflex14150/6000

Article no.: 3030589763, GTIN: 4052487247887



- **Flexible plastic spiral duct (peak compressive strength class 450N DIN EN 61386-24)**
- **A pressure-tight cable entry system (for up to 2.5 bar external pressure) can be created using the matching connection components.**

Flexible and very rugged duct A pressure-tight cable entry system can be created with the matching connection components.



Picture may differ from selected product

FACTS

Advantages:

- Duct available in single lengths of up to 25 m
- Constructible duct system
- Smooth inner surface for gentle cable pulling

Scope of delivery:

- Coils in lengths of 25 m (special lengths are available in 0.5 m sections)
- includes closing cover

Dimensions:

- ID: 151 mm \pm 1 mm
- OD: 166 mm \pm 1 mm

Properties:

- Peak compressive strength: 745 N
- Minimum bending radius: 900 mm
- Weight: 4500 g/m
- Installation temperature from +5° to + 50°C
- Smooth inner surface for gentle cable pulling
- Weather-proof, UV-resistant and rot-resistant
- Resistant to brine and seawater

Material:

- Hard PVC/soft PVC

Tightness:

- gastight and watertight to 2.5 bar

FEATURES

Length (m): 6.0

PICTURES

