

# Floor entry pipe bend

for district heating lines

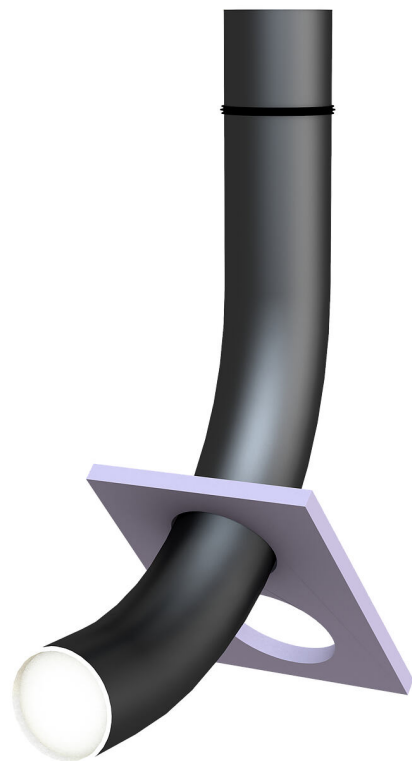
## FUBO RB250 r800

Article no.: 3030566133, GTIN: 4052487247481



- **quick, tool-less installation**
- **Flexible, height-adjustable 3-bar seal**
- **Continuous pipe section**

Flexible installation on site thanks to height-adjustable seal and separate installation device. Easy positioning and installation with the supplied mounting device.



Picture may differ from selected product

# FACTS

## Advantages:

- Set-up device can be used for several sizes
- Straight pipe section for height adjustment
- Suitable for the use of press seals

## Scope of delivery:

- 1 piece of pipe bend
- 1 piece of 3-ribbed seal
- 1 piece of installation fixture
- 2 pieces of closing covers

## Dimensions:

- Pipe bend radius: 800 mm
- Top 680 mm straight pipe section

## Application range:

- Water exposure class DIN 18533: W1-E
- Waterproof concrete stress class 1 and 2

## Material:

- Pipe bend: PVC
- 3-ribbed seal: EPDM
- Installation device: Styrodur (XPS)
- Closing cover: PE

## Tightness:

- gastight and watertight

# FEATURES

Pipe bend Øi (mm): 250

Pipe bend Øa  
(mm): 264

## PICTURES

