

Slab entry

with foil flange

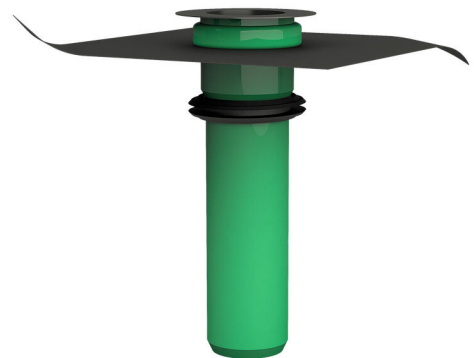
BDFF160 KG2000

Article no.: 3030551738, GTIN: 4052487246484



- **ready for installation in the slab**
- **Square foil flange**
- **includes closing cover**

For connecting KG-/HT-pipes. Gas- and watertight connection to the base plate with an integrated lip seal. Includes foil flange for connection to a bituminous thick coating, weldable membrane, or vapour barrier.



Picture may differ from selected product

FACTS

Advantages:

- easy connection of the sealing or vapour barrier using a foil flange
- no interruption of the waste water pipe system
- with push-in socket on one side to fit standard KG-/HT-pipes
- available in KG and KG2000
- Can be cut to length on site

Scope of delivery:

- KG pipe with bonded lip seal
- KG2000 pipe with welded-on lip seal
- 1 piece of closing cover
- oil and bitumen-resistant foil flange



Dimensions:

- Pipe length: 500 mm
- Foil flange up to DN 160: 500 x 500 mm
- Foil flange from DN 200: 750 x 750 mm
- Material thickness of foil flange: 1.5 mm

Properties:

- Oil and bitumen-resistant foil flange

Application range:

- Water exposure class DIN 18533: W1-E
- Waterproof concrete stress class 1 and 2

Material:

- KG pipe: PVC-U
- KG2000 pipe: PP
- Lip seal: TPE
- Foil flange: EPDM

Tightness:

- pressure-rated up to 5,0 bar
- radon-proof

Tests/Standards:

- KG pipes to DIN EN 13476-2
- KG2000 pipes to DIN EN 14758

FEATURES

suitable for medium pipe OD (mm):	160
Type:	KG2000
Packing unit:	1

ACCESSORIES REQUIRED



EGO sealant