

Single wall insert with foldable rubber sleeve

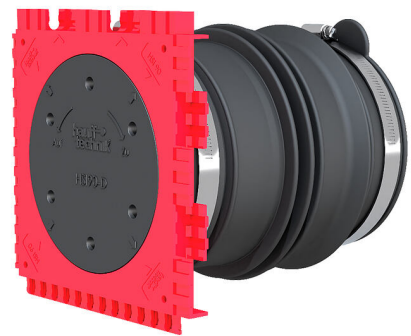
for setting in concrete and connecting cable ducts

HSI90 1x1 KMA94/500

Article no.: 3030541067



- thanks to the folding sleeve technique, no additional pipe connection components are necessary
- elastic and firmly supported connection due to increased insertion depth, even with deflection of the cable duct
- inside connection option for system seals for cables



Picture may differ from selected product

For the direct connection of cable ducts (exterior) and for connecting system seals for cables (interior).

FACTS

Advantages:

- defined insertion depth of the cable duct through the stop in the sleeve
- Available from wall thicknesses of 120 mm and above
- pressure-tight seal to the concrete through 3-ribbed seal, with two 3-ribbed seals from wall thicknesses of 150 mm and above

Scope of delivery:

- 1 piece pressure-tight closing cover
- 1 piece blind cover
- 1 piece of clamping strap



Dimensions:

- Frame dimensions: 145x 145 mm (per wall insert)

Material:

- Wall insert: ABS
- Closing cover: ABS with EPDM seal
- Adapter pipe: PVC
- Sleeve: EPDM
- Clamping straps: W4
- Blind cover: PP

Tightness:

- gastight and watertight
- radon-proof

FEATURES

| | |
|----------------------|-----|
| Wall thickness (mm): | 500 |
| Pipe OD (mm): | 92 |