

# Floor drain with foil flange

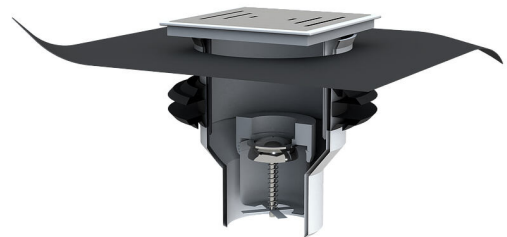
## with backstop

### BALF RLS

Article no.: 3030551821, GTIN: 4052487247108



- **frost-resistant backflow and odor barrier**
- **Residue-free drainage of the water in the drain body**
- **Prevention of clogging of the drain tank through dirt trap screen**
- **Square foil flange**



Suitable for draining gray water in the floor area. Integrated backflow preventer prevents the waste water from flowing back. Gas- and watertight connection to the base plate with an integrated lip seal. Includes foil flange for connection to a bituminous thick coating, weldable membrane, or vapour barrier.

Picture may differ from selected product

## FACTS

### Advantages:

- easy connection of the sealing or vapour barrier using a foil flange
- Fixed stainless steel grate
- Class K3 – loadable up to 300 kg
- Simplified cleaning and maintenance thanks to dirt trap screen
- Top frame with sludge trap screen infinitely adjustable and rotatable from 30-70 mm
- frost-proof



## Scope of delivery:

- 1 piece drain body with foil flange
- 1 piece top frame
- 1 piece of sludge trap screen
- 1 piece screwed stainless steel grate
- 1 piece of return flow and odor barrier
- 1 piece of construction time protection cover

## Dimensions:

- Top frame: 150 x 150 mm
- Drain connection: DN 110
- Foil flange: 500 x 500 mm

## Properties:

- Discharge rate: 1.68 l/s
- Resistant to hot water for short periods

## Application range:

- Waterproof concrete stress class 1 and 2

## Material:

- Base body: PP
- Drain grate: Stainless steel (AISI 304L)
- Lip seal: TPE
- Foil flange: EPDM

## Tightness:

- pressure-rated up to 5,0 bar
- radon-proof

# FEATURES

suitable for medium pipe OD  
(mm): 110

## PICTURES



## ACCESSORIES REQUIRED

