

Multi-line basic insert, arranged side by side for buildings without a basement

MSH Basic FUBO SR3 EBT

Article no.: 3030484469, GTIN: 4052487242950



- **variable height adaptation to the finished floor level**
- **easy integration of the vapour barrier using the adhesive flange**

For the collective feeding in and sealing of all supply lines (power, water, telecommunications or gas) through the base slab. Is supplemented with separately available spiral hose system, seal insert and utility sealing elements.



Picture may differ from selected product

FACTS

Advantages:

- Seals all supply lines through one entry
- All services are fed in separately
- Continuous duct connection up to the main supply lines at the property boundary possible
- The arrangement of the individual services is flexible
- The individual frame segments can be snapped together

Scope of delivery:

- 1 piece of basic insert with installation fixture



Dimensions:

- Width: 216 mm
- Length: 458 mm
- Height: 270 mm

Properties:

- DVGW-certified
- for setting in concrete in the floor slab – also for buildings with a basement, e.g. on a slope
- Also required: flexible KES systems

Application range:

- Water exposure class DIN 18533: W1-E
- Waterproof concrete stress class 1 and 2

Material:

- Wall sleeve frame parts: ABS
- Installation fixture: St37

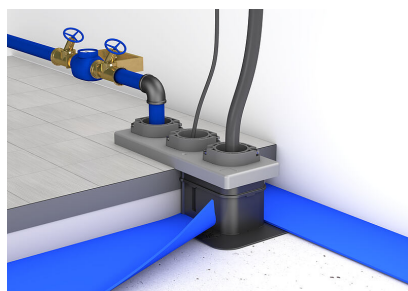
Tightness:

- gastight and watertight to 1.0 bar

Tests/Standards:

- DVGW VP 601

PICTURES



ACCESSORIES REQUIRED



Spiral hose system



Seal insert for basic insert