

# Multi-line basic insert, arranged side by side

For buildings without a basement

## MSH Basic FUBO SR4 EBT

: 1551008600, GTIN: 4052487204804



- **Variable height adaptation to the finished floor level**
- **easy integration of the vapour barrier using the adhesive ribbon**

For the collective feeding in and sealing of all supply lines (power, water, telecommunications, gas) through the base slab. Is supplemented with separately available spiral hose system, seal insert and utility sealing elements.



### Advantages:

- Seals all supply lines through one entry
- All services are fed in separately
- Continuous duct connection up to the main supply lines at the edge of the property possible
- The arrangement of the individual services is flexible
- The individual frame segments can be snapped together



### Scope of delivery:

- 1 piece basic insert with installation fixture

### Dimensions:

- Width: 216 mm
- Length: 579 mm
- Height: 270 mm

## Properties:

- DVGW-certified
- Can be supplemented with a flexible spiral hose system

## Application range:

- DIN 18533 W1-E
- Waterproof concrete stress class 1, waterproof concrete stress class 2

## Material:

- Wall sleeve frame parts: ABS
- Installation fixture: St37

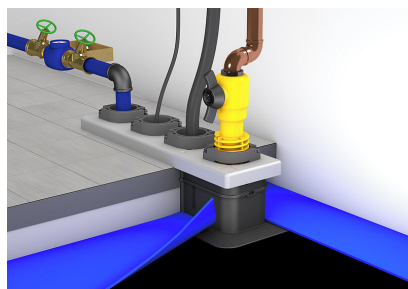
## Tightness:

- gastight and watertight to 1.0 bar

## Tests/Standards:

- DVGW VP 601

Item: Mehrsparten-Rohbauteil  
Reihenanzordnung





Spiral hose system



Seal insert for basic insert