

Multi-line basic insert, arranged side by side

For buildings without a basement

MSH Basic FUBO SR4 EBT

: 1551008600, GTIN: 4052487204804



- **Variable height adaptation to the finished floor level**
- **easy integration of the vapour barrier using the adhesive ribbon**

For the collective feeding in and sealing of all supply lines (power, water, telecommunications, gas) through the base slab. Is supplemented with separately available spiral hose system, seal insert and utility sealing elements.



Advantages:

- Seals all supply lines through one entry
- All services are fed in separately
- Continuous duct connection up to the main supply lines at the edge of the property possible
- The arrangement of the individual services is flexible
- The individual frame segments can be snapped together



Scope of delivery:

- 1 piece basic insert with installation fixture

Dimensions:

- Width: 216 mm
- Length: 579 mm
- Height: 270 mm

Properties:

- DVGW-certified
- Can be supplemented with a flexible spiral hose system

Application range:

- DIN 18533 W1-E
- Waterproof concrete stress class 1, waterproof concrete stress class 2

Material:

- Wall sleeve frame parts: ABS
- Installation fixture: St37

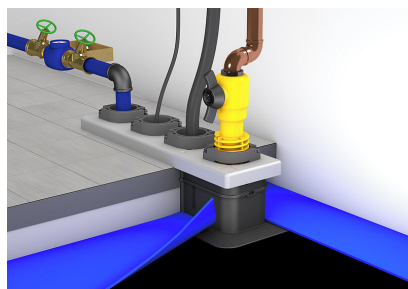
Tightness:

- gastight and watertight to 1.0 bar

Tests/Standards:

- DVGW VP 601

Item: Mehrsparten-Rohbauteil
Reihenanzordnung





Spiral hose system



Seal insert for basic insert