

Membrane injection system

for buildings with a basement

MIS40D 2x5-7 BL1000 Set10

: 3030380163, GTIN: 4052487229920



- **Universal building entry with membrane injection system for drill holes in the most common types of wall**
- **Controlled ejection of resin through slit membrane hose**
- **Sealing lips ensure gentle seal for media lines**



For reliable sealing of fibre optic cables and telecommunications lines.

Advantages:

- Quick to assemble in just a few minutes
- Not necessary to restore basement seal to DIN 18533

Scope of delivery:

- 1 packing unit:
- 10 pieces MIS40
- 10 pieces wall terminator element
- 10 pieces 2-component resin RESINATOR, 150 ml
- 1 piece quick tensioning device MIS40 SVS

Dimensions:

- For core drills ID: 40 - 50 mm

Application range:

- DIN 18533 W1-E, DIN 18533 W2.1-E
- Waterproof concrete stress class 1, waterproof concrete stress class 2

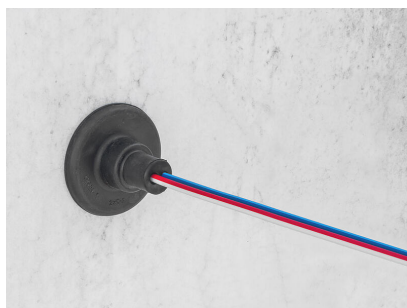
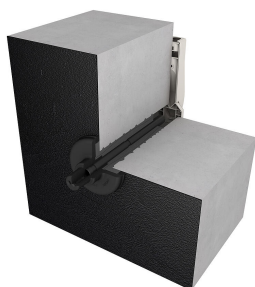
Material:

- Flange and counter-bearing
- Resin filler hose: PE
- Sealing tape: butyl
- Pipe: PVC-U
- Wall terminator element: Flame-retardant polycarbonate
- Fast arrangement fixture: glass fibre reinforced polyamide/ABS

Tightness:

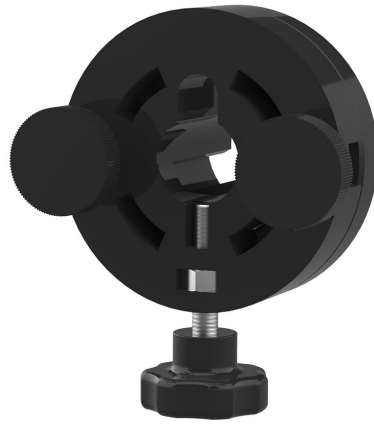
- gastight and watertight to 1.0 bar

Number of cables/medium:	2
Suitable for medium pipe OD (mm):	5 - 7
Overall length (mm):	1000
wall thickness (mm):	200 - 900





Cartridge gun



Quick tensioning device