

Foil sleeve

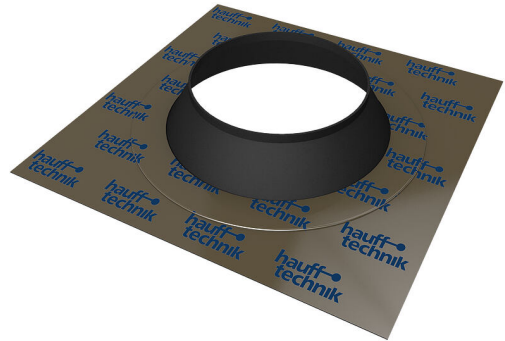
for entries through the floor slab

HFM 1x230-250

: 3030370217, GTIN: 4052487228091



- **easy integration of the vapour barrier or radon foil**
- **prevents convection and the resulting ingress of radon gas into the building**



Hauff foil sleeve for secure connection of entries through the slab to a vapour barrier, radon foil or other sheet-type seal on the slab.

Advantages:

- quick and easy installation
- excellent adhesive strength

Application range:

- DIN 18533 W1-E
- Waterproof concrete stress class 1, waterproof concrete stress class 2

Material:

- Foil flange: Aluminium-plastic composite foil with butyl rubber
- Rubber insert: EPDM

Tightness:

- gastight
- radon tight

| | |
|------------------------------------|--------------|
| Number of cables/medium: | 1 |
| Area of application cable OD (mm): | 230-250 |
| Size (mm): | 580 x 580 mm |

