

# Foil sleeve

for entries through the floor slab

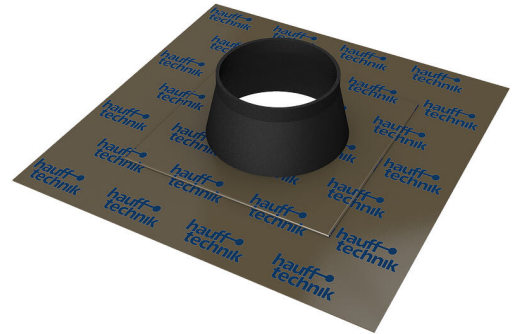
## HFM 1x100-110

Article no.: 3030370212, GTIN: 4052487228053



- **easy integration of the vapour barrier or radon foil**
- **prevents convection and the resulting ingress of radon gas into the building**

Hauff foil sleeve for secure connection of entries through the slab to a vapour barrier, radon foil or other sheet-type seal on the slab.



Picture may differ from selected product

## FACTS

### Advantages:

- can be installed easily and quickly on-site
- excellent adhesive strength

### Application range:

- Water exposure class DIN 18533: W1-E
- Waterproof concrete stress class 1, waterproof concrete stress class 2

### Material:

- Foil flange: Aluminium-plastic composite foil with butyl rubber
- Rubber insert: EPDM

## Tightness:

- gastight
- radon tight

## FEATURES

|                          |              |
|--------------------------|--------------|
| Number of cables/medium: | 1            |
| Size (mm):               | 320 x 320 mm |

## PICTURES

