

# Single wall insert with flange connection

for setting in concrete

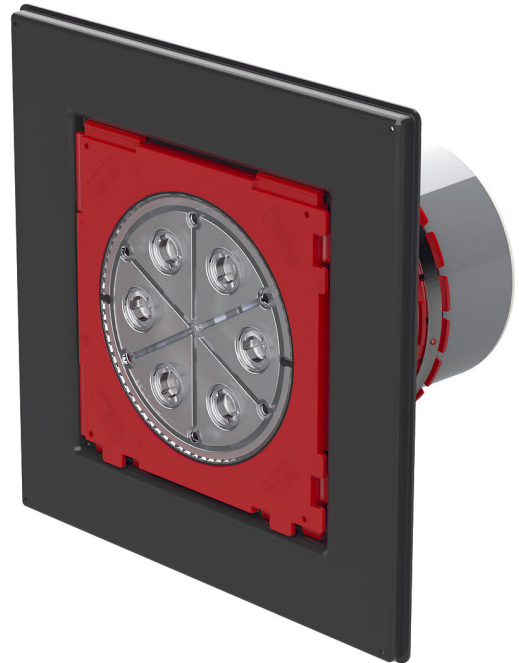
HSI150 1x1 K AF/130

: 2102070021, GTIN: 4052487219679



- **Flange connection for the processing of plastic-modified bitumen thick coatings**
- **Tried and tested solution for use in fresh concrete composite systems**
- **1x1 or 1x4 package configuration**
- **Quality mark: sealed ex works. Option to check for accidental or unauthorised opening of the closing cover**

For the gastight and watertight connection on one side of system seals for cables or cable ducts and a high level of flexibility for subsequent use.



## Advantages:

- System seal can be connected (e.g. cable duct connection or cable seal)
- Simple installation in the formwork using the pre-drilled nail holes.

## Scope of delivery:

- 1 piece Pressure-tight closing cover

## Dimensions:

- Frame dimensions 1x1 package configuration: 340 x 340 mm
- Frame dimensions 1x4 package configuration: 970 x 340 mm
- Minimum wall thickness: 100 mm



## Properties:

- FHRK-certified

## Application range:

- DIN 18533 W1-E, DIN 18533 W2.1-E
- Waterproof concrete stress class 1, waterproof concrete stress class 2

## Material:

- Wall insert: ABS with TPE 3-ribbed seal
- Adapter pipe: PVC
- Closing cover: ABS with TPE seal
- Integrated patch flange: ABS

## Tightness:

- gastight and watertight to 2.5 bar
- radon tight

wall thickness  
(mm): 130

