

Duct connection

for connecting to core drill or wall sleeve

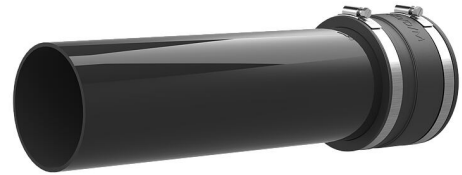
KES150 MA160-172/140-163 SET

Article no.: 2125818000, GTIN: 4052487058278



- **pipe connection to form a pressure-tight cable entry system (2.5 bar external pressure)**

For connecting the Hateflex spiral hose 14150 to core drills or wall sleeves. The pipe socket is connected to the duct with a sleeve. Sealing within the wall is done by an additional press seal (not included in scope of delivery)



Picture may differ from selected product

FACTS

Advantages:

- Mechanically stable, flexible connection with system sleeve
- Thick-walled, stable pipe

Scope of delivery:

- 1 piece pipe including sleeve with clamping straps

Dimensions:

- Pipe socket OD: 160 mm
- Protruding pipe socket length: approx. 440 mm

Material:

- Sleeve: EPDM
- Pipe socket: PVC
- Clamping straps: W4

Tightness:

- Gas-tight and watertight up to 2.5 bar

FEATURES

Item: Rohranschluss zur Adaption des Kunststoffspiralschlauches

PICTURES



ACCESSORIES REQUIRED



Universal Toolset