

# Compensating attachable duct collar

## with segmented rings

ADM150 75/90/110

: 1400060150, GTIN: 4052487127530



- **Absorption of radial and axial movements**
- **Segmented ring technology for adjustment to three or five different pipe diameters on site**

For dowelling core drills, break-throughs or wall sleeves in walls or in front of recesses on sheet steel housings. Due to the design of the system, the existing basement seal can be professionally integrated without complex post-processing work. The same component simultaneously seals the incoming media pipe.



### Advantages:

- Flexible arrangement of pipes in core drills/break-throughs or recesses

### Scope of delivery:

- Attachment elements including sealing ring

### Application range:

- DIN 18533 W1-E, DIN 18533 W2.1-E
- Waterproof concrete stress class 1, waterproof concrete stress class 2

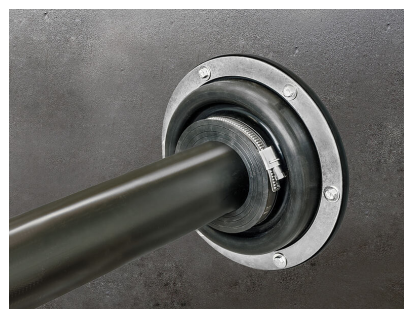
## Material:

- Sealing sleeve: EPDM
- Dowel ring: stainless steel V2A (AISI 304L)
- Clamping straps: stainless steel V2A (AISI 304L)
- Fastenings: stainless steel V4A (AISI 316L)

## Tightness:

- gastight and watertight

Suitable for medium pipe OD (mm): 75/90/110  
Wall sleeve/core drilled hole ID (mm): 150



EGO sealant