

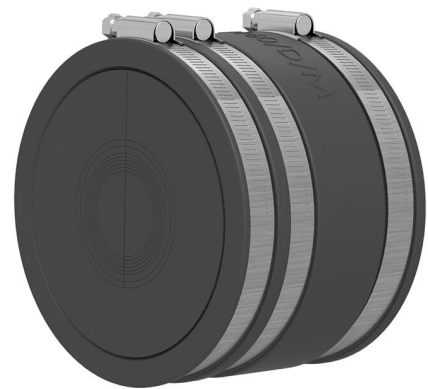
# Sealing set interchangeable insert

## for cable seal at the end of the spiral hose

### KES150 MA WE160 SG 1x48-83 SET

: 2125817103, GTIN: 4052487164764

Sealing set with sleeve including split interchangeable insert with segment ring technology for sealing cables with rubber compression seal at the end of Hateflex spiral tube 14150.



#### Advantages:

- Segmented ring technology for adjustment to three or five different pipe diameters on site
- The interchangeable insert is installed after the cables have been laid
- The entire cross-section of the empty conduit system is used when cables are laid

#### Scope of delivery:

- Blind plugs
- Sleeve with clamping straps

#### Dimensions:

- Interchangeable insert: OD 160 mm
- Interchangeable insert: OD 100 mm
- Maximum configuration: according to variant table

## Material:

- Sleeve: EPDM
- Clamping straps: W4
- Interchangeable insert: EPDM

## Tightness:

- gastight and watertight to 0.5 bar

Number of cables/medium: 1  
Area of application cable OD  
(mm): 48-83

