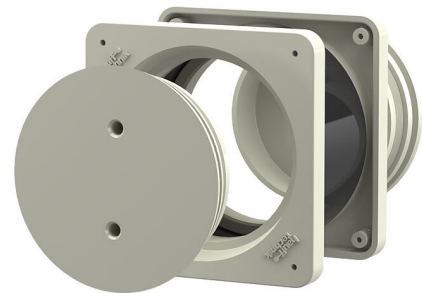


Site power supply entry for secondary substations

BD68 K2/250

: 302040000, GTIN: 4052487005135

For temporary power supply and/or emergency supply to secondary substations. With the site power supply entry, cables can be fed into the substation above ground while construction work is in progress. This means that the doors of the substation can be closed.



Advantages:

- Sealed ready for installation
- Can only be opened with a special tool, is protected against unauthorised opening
- Simple installation in the formwork

Scope of delivery:

- 2 pieces closing covers

Dimensions:

- Frame dimensions: 120x 120 mm

Material:

- Connection frame: ABS
- Adapter pipe: PVC

Clear width (mm): 68
wall thickness
(mm): 250



Flexible socket wrench