

# Single wall insert

for setting in concrete

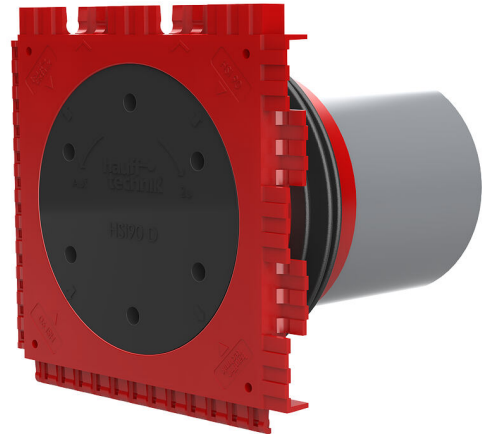
HSI90 1x1 K/400

: 3030303457, GTIN: 4052487223317



- **3-ribbed seal is sprayed on to create pressure-tight seal with concrete**

For the gastight and watertight connection on one side of system covers for cables or cable ducts, for a high level of flexibility for subsequent use.



## Advantages:

- System seal can be connected (e.g. cable duct connection or cable seal)
- Packages can be created with frame connection system on site



## Scope of delivery:

- 1 piece Pressure-tight closing cover

## Dimensions:

- Frame dimensions: 145x 145 mm (per wall insert)
- Centre distance: 135 mm
- Minimum wall thickness: 70 mm

## Application range:

- Waterproof concrete stress class 1, waterproof concrete stress class 2

## Material:

- Wall insert: ABS with TPE 3-ribbed seal
- Adapter pipe: PVC
- Closing cover: ABS with EPDM seal

## Tightness:

- gastight and watertight to 2.0 bar
- radon tight

wall thickness  
(mm): 400

