

Double wall insert

for setting in concrete

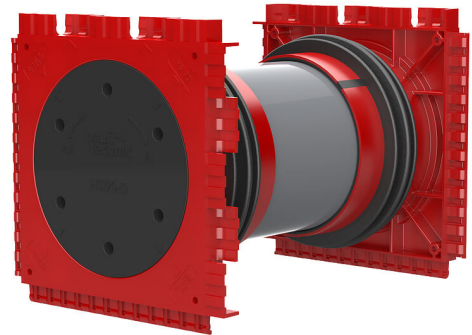
HSI90 1x1 K2/400

: 3030440642, GTIN: 4052487242066



- **3-ribbed seal is sprayed on to create pressure-tight seal with concrete**

For the gastight and watertight connection on both sides of system covers for cables and cable ducts and maximum flexibility for subsequent use.



Advantages:

- System seal can be connected on both sides (e.g. cable duct connection and cable seal)
- Packages can be created with frame connection system, delivery ex works



Scope of delivery:

- 2 pieces pressure-tight closing covers

Dimensions:

- Frame dimensions: 145x 145 mm (per wall insert)
- Centre distance: 135 mm
- Minimum wall thickness: 100 mm

Application range:

- Waterproof concrete stress class 1, waterproof concrete stress class 2

Material:

- Wall insert: ABS with TPE 3-ribbed seal
- Adapter pipe: PVC
- Closing cover: ABS with EPDM seal

Tightness:

- gastight and watertight to 2.0 bar
- radon tight

wall thickness
(mm): 400

