

# Earthing entry

## with terminal lug and cross-clamp

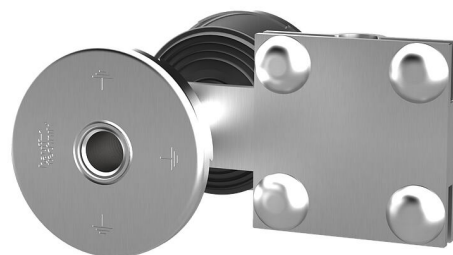
### HEA PK M16/150

: 1700031150, GTIN: 4052487164795



- **Patented twist resistance provided by special contour of contact washer**

For installation flush with the formwork in waterproof concrete. Earthing connections can be made on the inside and outside with the thread on both sides in the conductor core. There is a tab with cross-clamp for making an earthing connection in the wall.



### Advantages:

- Water barrier for tightness with concrete
- Watertight connection thread on both sides (blind hole)
- Resistant to corrosion

### Scope of delivery:

- 1 piece Cross-clamp for connecting reinforcement/concrete-footing earth
- 2 pieces Protective covers with 4 nail holes

### Dimensions:

- Conductor core: round,  $\varnothing$  25 mm
- Conductor core link: with M16 threaded bolt
- Contact washer:  $\varnothing$  72 mm

### Application range:

- Waterproof concrete stress class 1, waterproof concrete stress class 2

## Material:

- Conductor core and contact washers: stainless steel V4A (AISI 316L)
- Conductor core link: St37, galvanised
- Water barrier: NBR
- Protective covers: PE
- Terminal lug with cross-clamp: St37

## Tests/Standards:

- DIN 18014
- DIN EN 62305-3
- VDE 0185-305-3 (with lightning protection application)

wall thickness  
(mm): 150  
Threaded bolt: M16

