

# System cover

with sleeve method for plastic spiral hoses

## KES MA150 D

: 2125810000, GTIN: 4052487058070



- **Mechanical fixing (bayonet) and seal (clamping nut) act independently**
- **Bayonet system with return lock and locking screw connection (for protection against automatic opening)**



For use in wall insert and polymer flange HSI150 and for connecting plastic spiral hoses. The seal is created with the sleeve method, with a rubber sleeve being clamped onto both the system cover and the plastic spiral hose.

### Advantages:

- Mechanically stable, elastic connection with system sleeve
- Sleeve method for flexible adaptation of the empty conduit length



### Scope of delivery:

- 1 piece Sleeve with clamping straps

### Properties:

- FHRK-certified
- For the duct connection we recommend using the spacer HSI AH40 to extend the centre distance when installing multiple HSI150 wall inserts

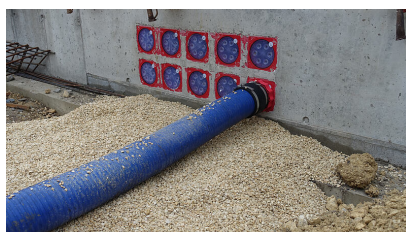
## Material:

- System cover: polycarbonate
- Clamping nut: PC/PBT blend
- Sleeve: EPDM
- Clamping straps: W4

## Tightness:

- gastight and watertight to 2.5 bar

Item: Systemdeckel



Toolset for KES-M



Flexible socket wrench