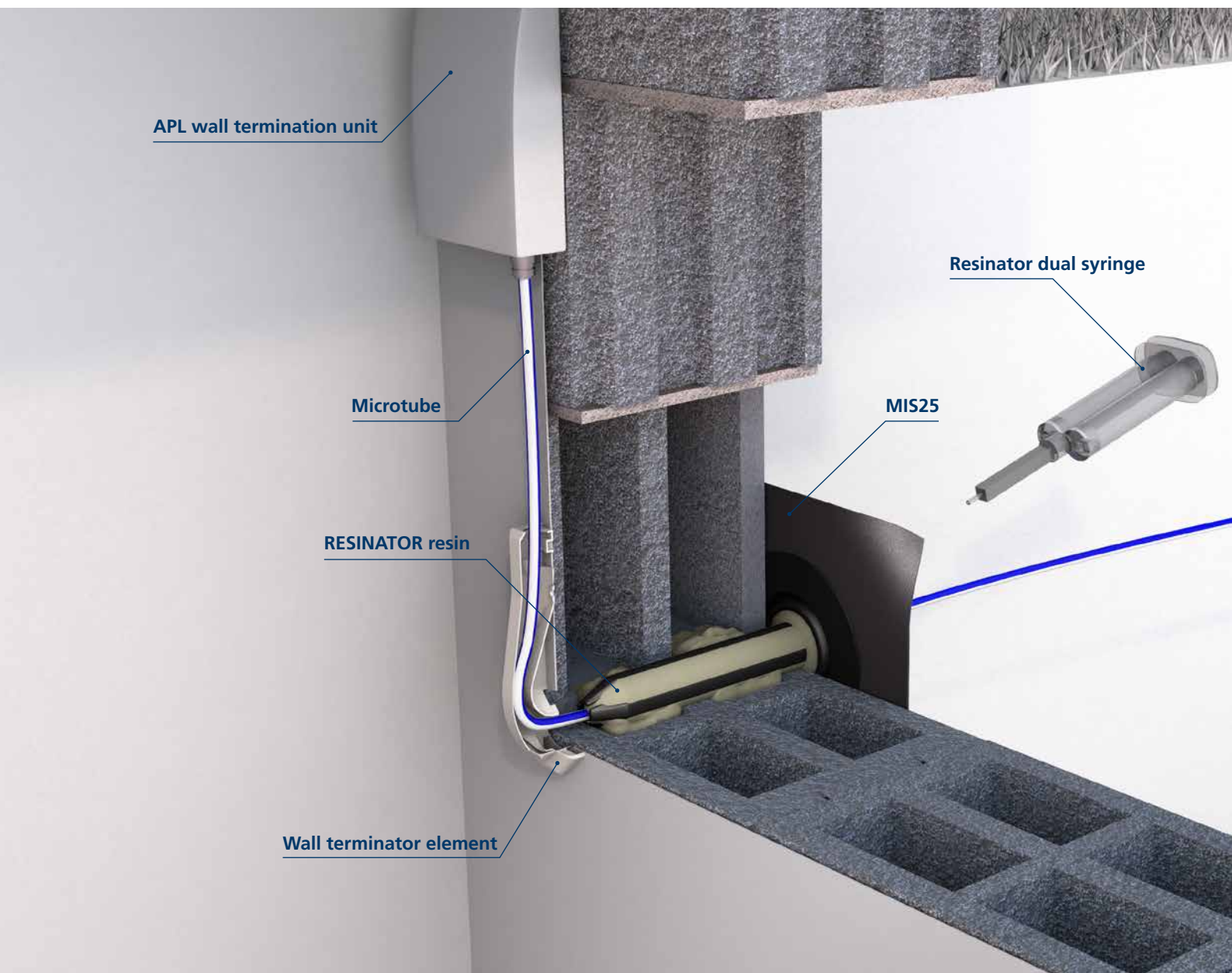


MIS25

Fibre optics building entry for subsequent installation

Functional principle



Fibre-optic expansion is progressing at an ever faster pace. A connection to the fibre-optic network has now become standard, not only for new buildings, but also for connecting existing buildings to high-speed internet. A fibre-optic connection is therefore also part and parcel of a future-proof refurbishment. Whether brick, hollow concrete block or solid concrete, with the MIS25 Hauff-Technik offers a single house entry for fibre-optic pipes to suit any type of wall.

Thanks to the tried-and-tested membrane technology in conjunction with the RESINATOR resin, a sealed entry for the connection to the fibre-optic network can also be easily installed in older buildings. It can be installed at an angle of up to 45°, making the MIS25 suitable for installation in buildings with and without a basement. Assembly takes place in a 25-mm opening, without the use of any tools. At a filling quantity of 25 ml, very little RESINATOR resin is required for the purpose.



Benefits



Horizontal or inclined installation up to a 45° angle



Controlled RESINATOR resin discharge thanks to proven membrane injection system



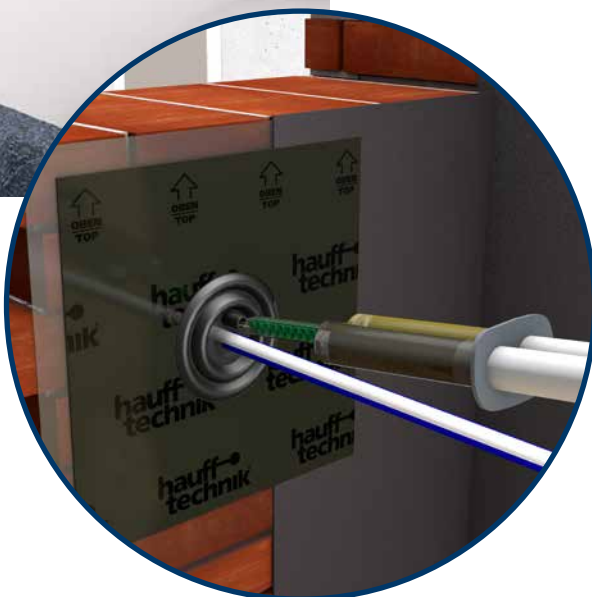
Tool-free assembly with RESINATOR double syringe



Sealing in all common wall types (DIN 18533/WU concrete)



Minimum RESINATOR resin quantity thanks to adhesive collar



Flexible installation variants



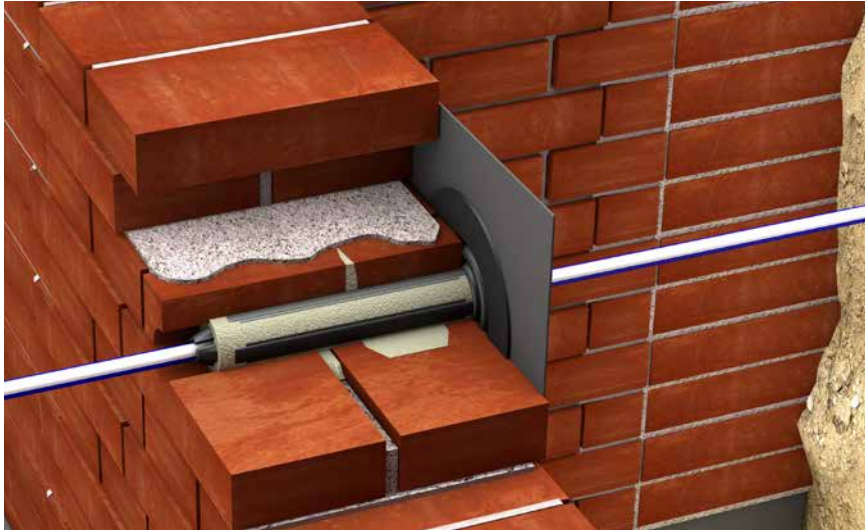
Inclined installation

Inclined installation up to an inclination of 45° is mainly used in buildings without a basement.

Straight installation

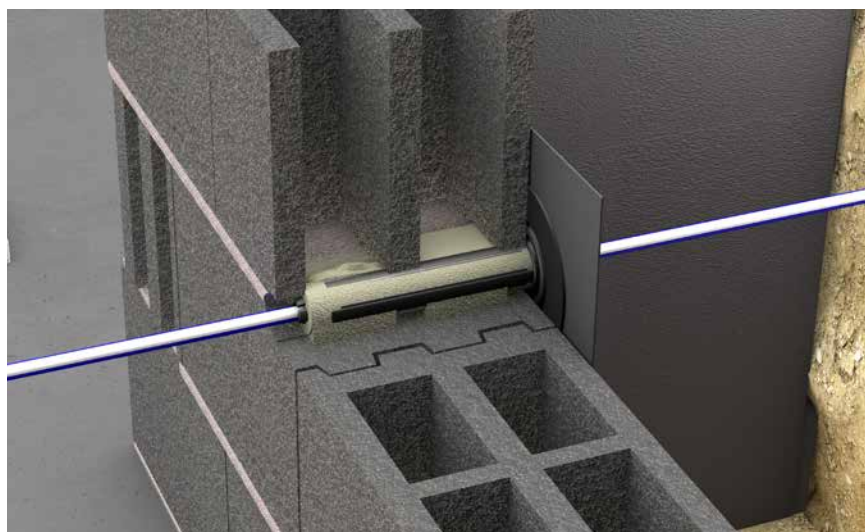
When routing microtubes in buildings with basements, the MIS25 is mainly installed straight.

Various installation requirements



Controlled resin discharge

Membrane injection technology ensures a controlled resin discharge to evenly fill the opening with the RESINATOR resin. The MIS25 can therefore be used for a variety of wall types and ensures a reliable seal in brick walls, concrete or hollow concrete blocks.



Membrane injection system

for buildings with or without basement

MIS25 1x6-13 PRO



Facts and advantages



- horizontal or inclined installation up to a 45° angle
- controlled RESINATOR resin discharge thanks to proven membrane injection system
- tool-free assembly with RESINATOR double syringe
- sealing in all common wall types (DIN 18533/WU concrete)
- minimum RESINATOR resin quantity thanks to adhesive collar

Scope of delivery:

- 1 x MIS25
- 1 x RESINATOR dual syringe, 25 ml
- 1x wall terminator element

Number of cables/medium	Suitable for media pipe OD (mm)	Article code	Article number	GTIN
1	6 – 13	MIS25 1x6-13 PRO	3030477964	4052487242905

RESINATOR dual syringe

for MIS25

EH RESINATOR 25



Facts and advantages



- tool-free installation
- can be processed by hand
- very small and practical
- one component
- only 25ml of RESINATOR resin required

Scope of delivery

1 MIS25 – Membrane injection system

Flexible exterior flange with joint covers the wall break-through, ties in the building seal on the outer wall (in accordance with DIN18533), and allows horizontal or angled installation. The resin is injected through a filler opening at the flange. The membrane controls the resin discharge.

2 RESINATOR dual syringe

Expanded 2-component resin Fills the spaces between the opening and micropipe, including any blowholes and cavities, creating a reliable seal.

3 Wall terminator element

WAE directs the inserted micro tube to the wall and forms a clean wall finish for straight and inclined installation positions on the inside of the wall.

4 Sandpaper

By roughening the microtube with the sandpaper, the tightening forces are increased.



Hauff-Technik GmbH & Co. KG

Robert-Bosch-Straße 9
89568 Hermaringen, GERMANY

Tel. +49 7322 1333-520
Fax +49 7322 1333-999

ht.international@hauff-technik.de