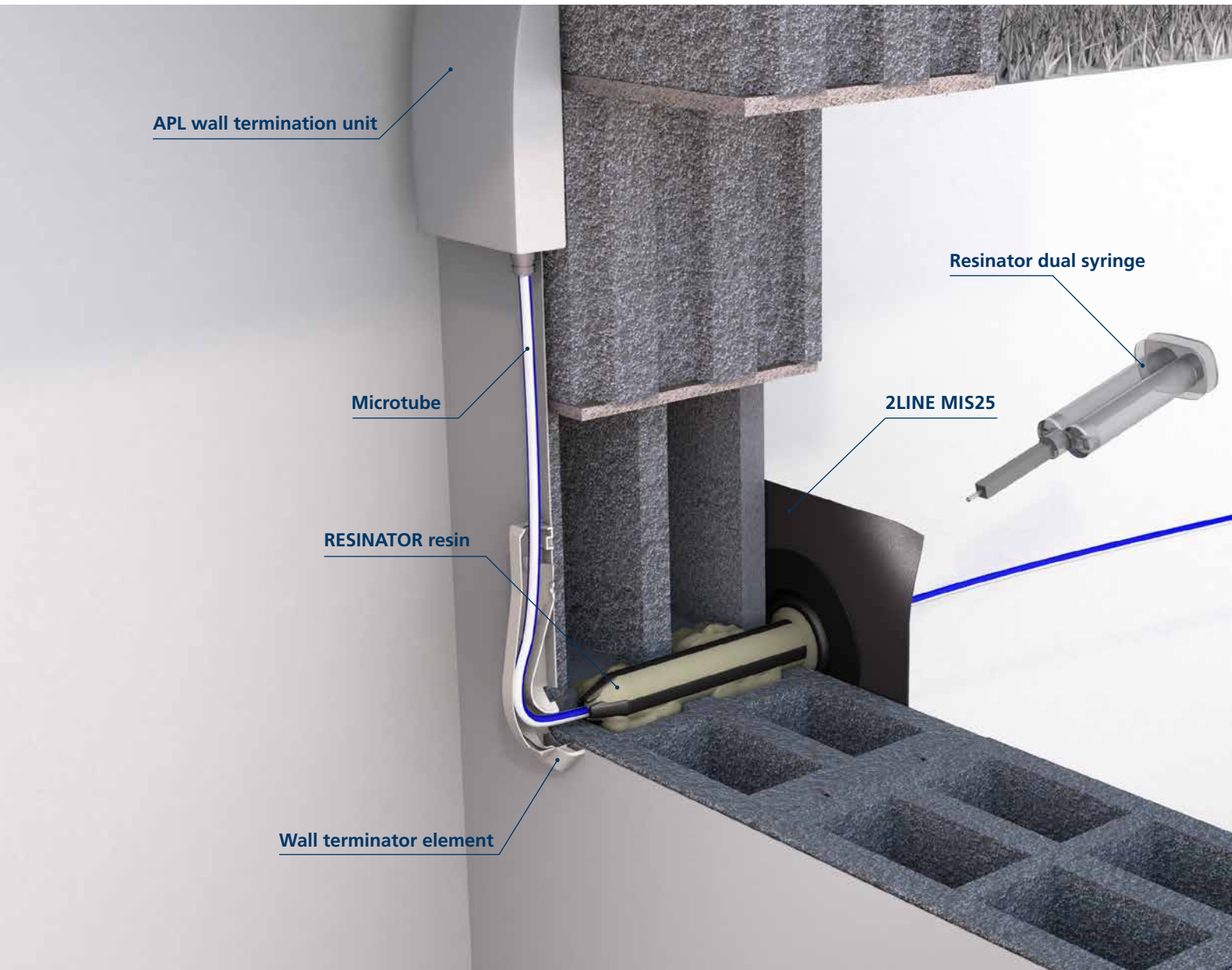


## 2LINE MIS25

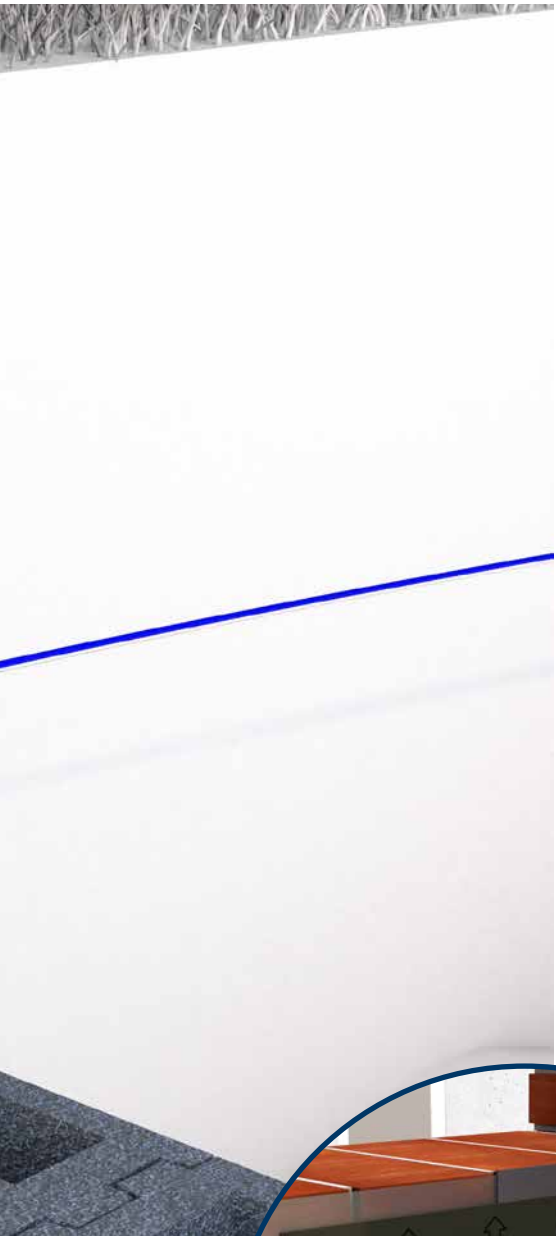
Fibre optics building entry for subsequent installation

# Functional principle



Fibre-optic expansion is progressing at an ever faster pace. A connection to the fibre-optic network has now become standard, not only for new buildings, but also for connecting existing buildings to high-speed internet. A fibre-optic connection is therefore also part and parcel of a future-proof refurbishment. Whether brick, hollow concrete block or solid concrete, with the 2LINE MIS25 Hauff-Technik offers a single house entry for fibre-optic pipes to suit any type of wall.

Thanks to the tried-and-tested membrane technology in conjunction with the RESINATOR resin, a sealed entry for the connection to the fibre-optic network can also be easily installed in older buildings. It can be installed at an angle of up to 45°, making the 2LINE MIS25 suitable for installation in buildings with and without a basement. Assembly takes place in a 25-mm opening, without the use of any tools. At a filling quantity of 25 ml, very little RESINATOR resin is required for the purpose.



## Benefits



horizontal or inclined installation  
up to a 45° angle



controlled RESINATOR resin discharge thanks  
to proven membrane injection system



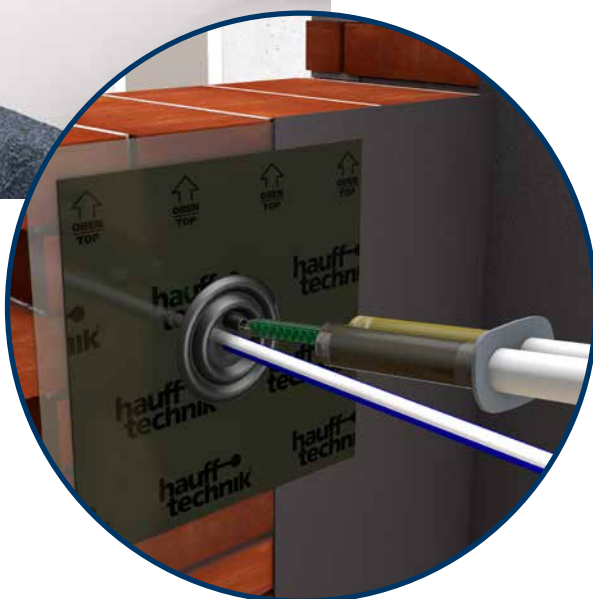
tool-free assembly with  
RESINATOR double syringe



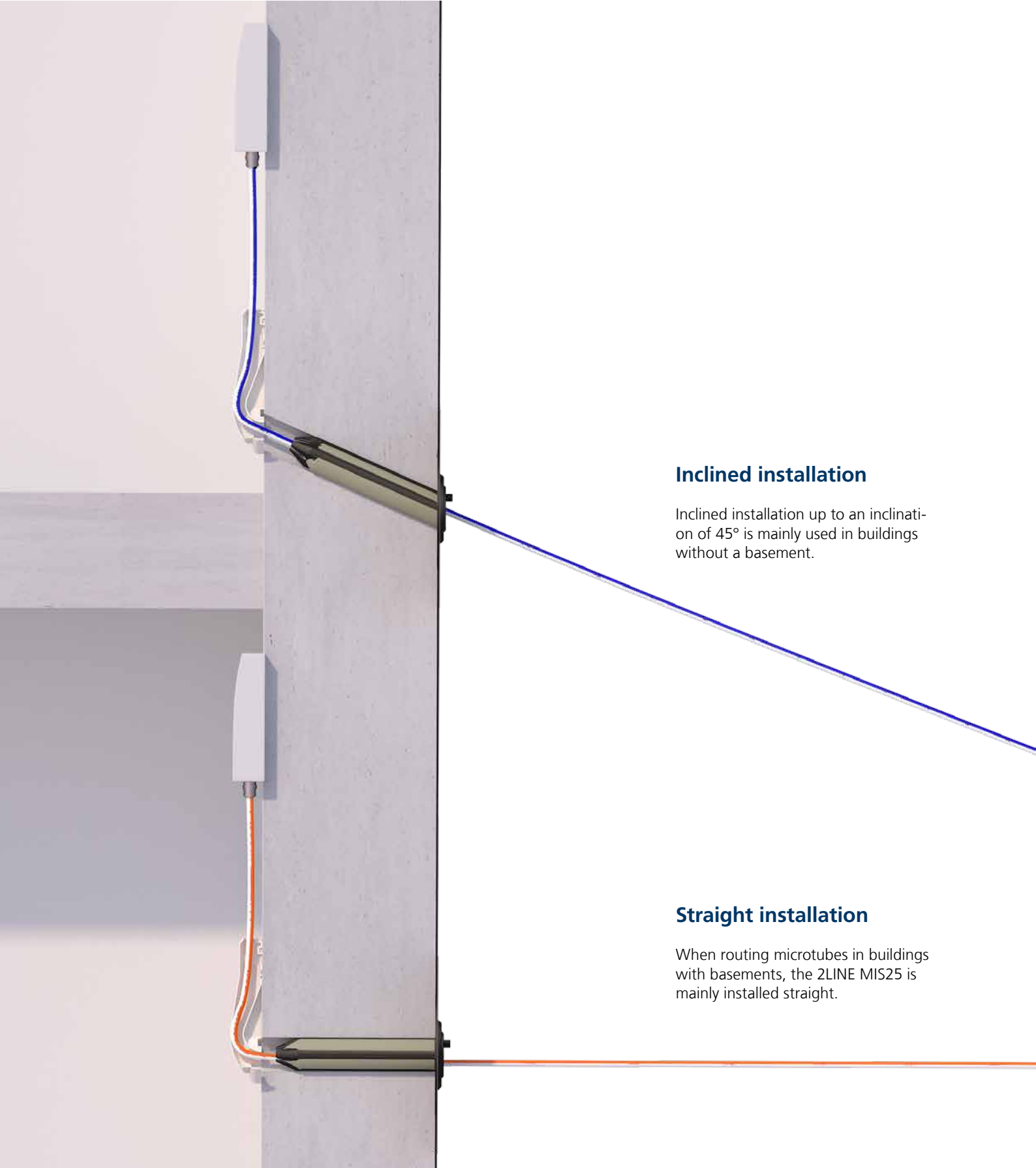
sealing in all common wall types  
(DIN 18533/WU concrete)



minimum RESINATOR resin quantity  
thanks to adhesive collar



# Flexible installation variants



### Inclined installation

Inclined installation up to an inclination of 45° is mainly used in buildings without a basement.

### Straight installation

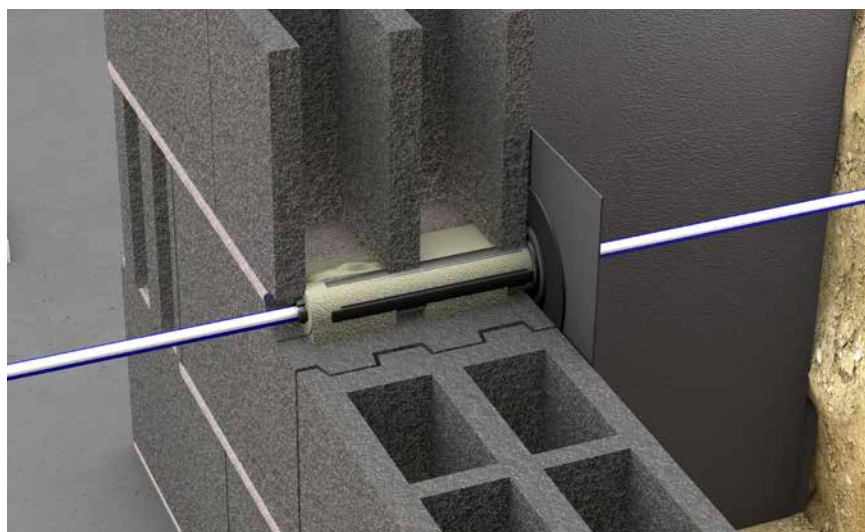
When routing microtubes in buildings with basements, the 2LINE MIS25 is mainly installed straight.

## Various installation requirements



### Controlled resin discharge

Membrane injection technology ensures a controlled resin discharge to evenly fill the opening with the RESINATOR resin. The 2LINE MIS25 can therefore be used for a variety of wall types and ensures a reliable seal in brick walls, concrete or hollow concrete blocks.



# Membrane injection system

for buildings with or without basement

2LINE MIS25 1x6-13 PRO



## Facts and advantages

- horizontal or inclined installation up to a 45° angle
- controlled RESINATOR resin discharge thanks to proven membrane injection system
- tool-free assembly with RESINATOR double syringe
- sealing in all common wall types (DIN 18533/WU concrete)
- minimum RESINATOR resin quantity thanks to adhesive collar

### Scope of delivery:

- 1 x 2LINE MIS25
- 1 x RESINATOR dual syringe, 25 ml
- 1x wall terminator element

Number of cables/medium	Suitable for media pipe OD (mm)	Article code	Article number	GTIN
1	6 – 13	<b>2LINE MIS25 1x6-13 PRO</b>	3030477964	4052487242905

# RESINATOR dual syringe

for 2LINE MIS25

EH RESINATOR 25



## Facts and advantages

- tool-free installation
- can be processed by hand
- very small and practical
- one component
- only 25ml of RESINATOR resin required

## Scope of delivery

### 1 2LINE MIS25 – Membrane injection system

Flexible exterior flange with joint covers the wall break-through, ties in the building seal on the outer wall (in accordance with DIN18533), and allows horizontal or angled installation. The resin is injected through a filler opening at the flange. The membrane controls the resin discharge.

### 2 RESINATOR dual syringe

Expanded 2-component resin Fills the spaces between the opening and micropipe, including any blowholes and cavities, creating a reliable seal.

### 3 Wall terminator element

WAE directs the inserted micro tube to the wall and forms a clean wall finish for straight and inclined installation positions on the inside of the wall.

### 4 Sandpaper

By roughening the microtube with the sandpaper, the tightening forces are increased.



**Hauff-Technik GRIDCOM GmbH**

Geiselroter Heidle 1  
73494 Rosenberg, GERMANY

Tel. +49 7967 9008-30  
Fax +49 7967 9008-99

[sales@hauff-technik-gridcom.de](mailto:sales@hauff-technik-gridcom.de)