

Immer. Sicher. Dicht.



CONNECTION OF CABLE SEALING SYSTEM
KES-M 150 TO CABLE ENTRY SYSTEM HSI 150

SUBSTATION ZITTAU – NORTH

Preparation work for cable sealing system KES-M 150

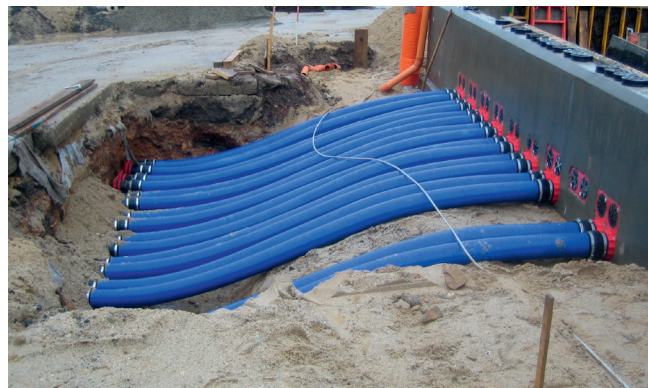


Coordination of material – Installation of Hateflex spiral hose 14150 with sleeve system. The system is laid out at the ramp to ease the allocation to the concrete basement.



Coordination of material – Installation of Hateflex spiral hose 14150 with sleeve system. The system is laid out at the ramp to ease the allocation to the concrete basement.

Installation and connection of cable duct system KES-M 150



Laying of system – Connection to the already cast-in double wall insert HSI 150-K2/250 to achieve the sealing on both sides.



Connection to HSI 150 cable entry system – Connection of Hateflex spiral hose with sleeve system – for elongation and lowering of connections.

PROJECT INFORMATION

Location	Umspannwerk Zittau-Nord Neusalzaer Straße 52 02763 Zittau
Owner	ENSO Energie Sachsen Ost AG Friedrich-List-Platz 2 01069 Dresden
Requirement	Teilersatz und Ergänzung 110/20/10-kV-Umspannwerk Zittau-Nord
Planning	Ingenieurbüro Böhme & Partner Sachsdorfer Str. 5a 01157 Dresden
Contractors construction	OBAG Hochbau GmbH Paulistraße 1 02625 Bautzen
Elektro technic	eto Elektrotechnik Oelsnitz/E. GmbH Bahnhofstraße 43 09376 Oelsnitz/Erz.

SOLUTIONS PROVIDED BY HAUFF-TECHNIK

Specification	cable sealing systems, cable entry systems and earthings
Requirement	gas- und watertight building entries
Products used	HSI 150-K2/250 KES-M 150 with sleeve system HEA

Hauff-Technik GmbH & Co. KG

Robert-Bosch-Straße 9
89568 Hermaringen, GERMANY

Tel. +49 7322 1333-0
Fax +49 7322 1333-999

office@hauff-technik.de